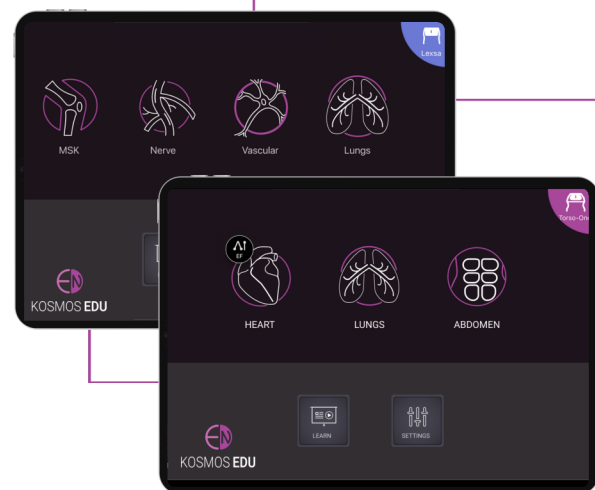


YOUR POINT-OF-CARE ULTRASOUND TRAINING PARTNER

Elevate POCUS education and training


Kosmos EDU is our educational application, designed specifically to help novice users become familiar with ultrasound. Whether you're new to ultrasound, or exploring new clinical applications for your practice, Kosmos EDU offers a unique learning environment.

With cutting-edge educational AI and a full range of traditional imaging capabilities—from 2D and M-mode to PW, TDI, and CW Doppler—Kosmos EDU helps you sharpen your skills and elevate your training experience.



Schedule a demo of Kosmos EDU

 (844) 854-0800
www.echonous.com

 EchoNous Inc.
8310 154th Ave NE
Building B, Suite 200
Redmond, WA 98052, U.S.A.

Scan QR code



Kosmos EDU is designed for your educational needs:



Critical Care



Emergency Medicine



Cardiology



Family Medicine



Vascular Access



Primary Care



Nephrology



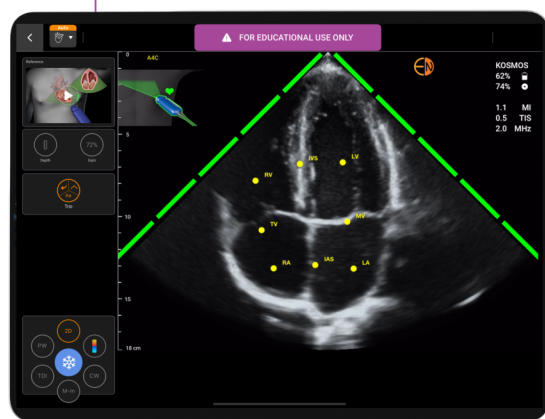
MSK



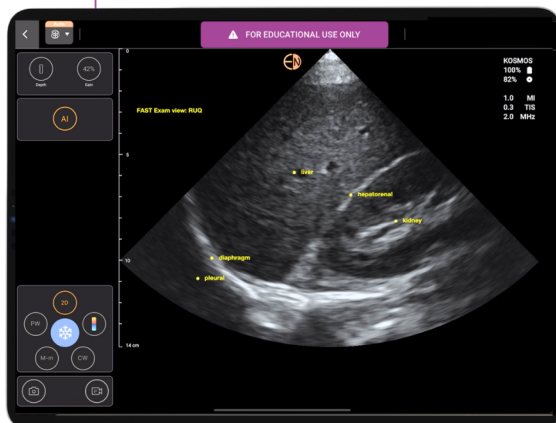
Anesthesiology

Advanced Capabilities

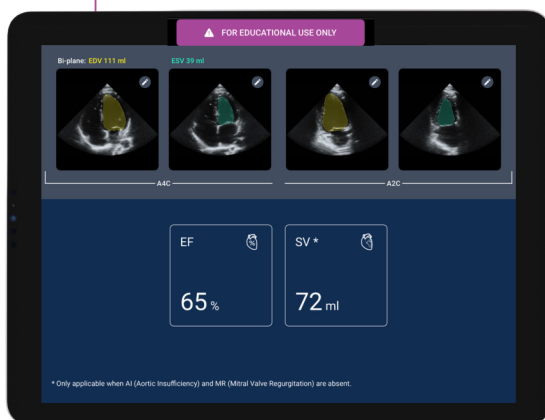
Kosmos EDU offers you the opportunity to “try before you buy” and explore the advanced capabilities of our top-tier features in a focused learning environment. Kosmos EDU gives you access to premium features.



Trio



AI FAST



Auto EF

- **Trio:** Real-time automated Guidance, Grading, and Labeling of the cardiac anatomy
 - Parasternal Long Axis (PLAX)
 - Apical 2 Chamber (A2C)
 - Apical 3 Chamber (A3C)
 - Apical 4 Chamber (A4C)
 - Apical 5 Chamber (A5C)
 - Subcostal 4 Chamber (SC-4C)
 - Subcostal Inferior Vena Cava (SC-IVC)
 - Parasternal Short Axis- Aortic Valve (PSAX-AV)
 - Parasternal Short Axis- Mitral Valve (PSAX-MV)
 - Parasternal Short Axis- Papillary Muscles (PSAX-PM)
- **AI FAST:** Real-time automated AI anatomical labeling and view identification
- **Auto EF:** AI-driven EF calculations
- **Auto Preset:** AI-driven cardiac workflow enhancement for multi-organ lung, abdominal and cardiac scanning
- **Auto Doppler:** AI-driven workflow enhancement for auto sample gate placement and interrogation
- **PW Doppler:** Allows site-specific velocity interrogation of blood flow
- **Tissue Doppler Imaging:** Allows for complete assessment of diastolic function
- **CW Doppler:** Allows interrogation of high velocity jets and valvular pathology

*For educational use only. Not for diagnostic use. Kosmos Trio is a separately downloadable educational app.

*Not all features are available in all markets, please check with your local representative for availability in your region.

EchoNous, Inc., for its affiliates. All rights reserved. EchoNous, echoous.com, and the EchoNous logo are trademarks of EchoNous, Inc. 8319 154th Ave. NE, Building B, Suite 200, Redmond, WA 98052. D011790_Rev C