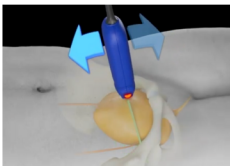
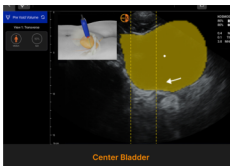
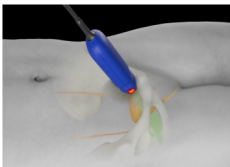
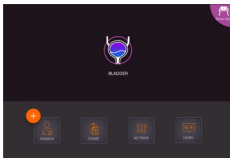


# KOSMOS BLADDER QUICK REFERENCE

Powered by the advanced AI technology of EchoNous, the Kosmos Bladder scanner sets a new standard for accuracy, reliability, and user-friendly design—all while remaining affordable for any budget. Use it as a dedicated bladder scanner or expand its capabilities for an all-in-one POCUS solution.



## 1 STARTING A BLADDER SCAN

- Apply gel to the probe
- Tap the Bladder preset to begin an exam

## 2 BLADDER WORKFLOW

- Tap **Pre Void Workflow** for high bladder volume
- Tap **Post Void Workflow** for low bladder volume

## 3 OBTAINING TRANSVERSE VIEW

### Position Probe

- Position the probe so that the orientation marker (orange dot) faces the patient's right hip
- Using firm, downward pressure, place the probe so it is midline on your patient and just above the pubic bone
- Angle the probe down towards the feet

### Center Bladder

- Kosmos Bladder AI will identify and highlight the bladder
- If the bladder is not centered on the screen, it will appear yellow. Follow the arrow indicator to center the bladder until the bladder is highlighted green

### Tilt Probe to Measure Bladder

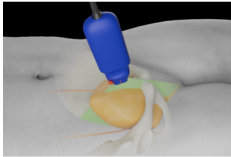
- Gently tilt the probe from head to toe
- The AI will capture and measure the view automatically
- **NOTE:** Tilting is not needed when conducting a post-void scan



## 4 ROTATE PROBE 90°

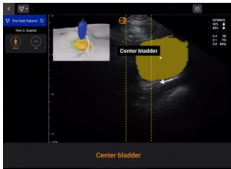
- Rotate the probe without lifting it off the skin
- The orientation marker (orange dot) should point towards the patient's head

## 5 OBTAINING SAGITTAL VIEW



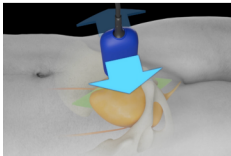
### Position Probe

- Using firm, downward pressure, place the probe so it is midline on your patient and just above the pubic bone
- Angle the probe down towards the feet



### Center Bladder

- Kosmos Bladder AI will identify and highlight the bladder
- If the bladder is not centered on the screen, it will appear yellow. Follow the arrow indicator to center the bladder until the bladder is highlighted green



### Tilt Probe to Measure Bladder

- Gently tilt the probe from right to left
- The AI will capture and measure the view automatically
- **NOTE:** Tilting is not needed when conducting a post-void scan

## 6 RESULTS

- Once you have obtained the Transverse and Sagittal views, Kosmos will show the result screen where you will see bladder volume measurements
- The measured volume is displayed in mL
- Tap **Accept Results** to accept and save the bladder scan
- Tap **Scan Again** to perform another measurement

