

# KOSMOS

by EchoNous



# EXPLORE THE POWER OF KOSMOS


**EchoNous is at the forefront of point-of-care ultrasound (POCUS) innovation, revolutionizing the field by introducing an all-new POCUS category, powered by AI.**

Traditional handheld ultrasound devices offer affordability and portability but often compromise on image quality and advanced capabilities. In contrast, cart-based systems provide exceptional image quality and comprehensive features but lack affordability and portability. With Kosmos, users get both the exceptional image quality and advanced performance of cart-based systems, with the affordability and unmatched portability of a handheld system. Layered on top of that is industry-leading AI that helps flatten the learning curve for novices and makes exam workflows more efficient. Kosmos is a POCUS solution that is both accessible enough for new users and powerful enough for experts. Don't settle for less, experience the perfect balance of accessibility and performance of Kosmos.

## Schedule A Demo of Kosmos

 (844) 854-0800

[www.echonous.com](http://www.echonous.com)

 EchoNous Inc.  
8310 154th Ave NE  
Building B, Suite 200  
Redmond, WA 98052, U.S.A.

Scan QR code



# ONE SYSTEM, MULTIPLE CONFIGURATIONS

## Kosmos Mobile

Henry Schein Item #7023564

Tailored for on-the-go clinicians, Kosmos Mobile includes an Apple iPad Air or Pro®, the Kosmos Essentials Bag, choice of probes, advanced Doppler features, and our innovative AI capabilities. Elevate patient care, enhance patient outcomes, and improve workflow efficiency on the move.



## Kosmos Probes

### Torso-One

Henry Schein Item #1458670

The Torso-One probe is specially optimized to provide exceptional whole-torso imaging for heart, lung and abdominal applications.

### Lexsa

Henry Schein Item #1458727

The Lexsa Linear Array probe is specially optimized to provide exceptional linear array imaging for MSK, Vascular, Nerve, Guidance, and Lung applications.



Torso-One

Lexsa



#### Durable

Kosmos probes are IP67 rated and tested to withstand the rigors of any point-of-care environment



#### 5-Year Warranty

Industry-leading, no-fine print, 5-year warranty



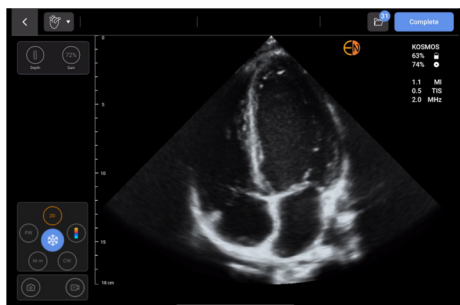
#### Made in USA

Manufactured with excellence in Washington

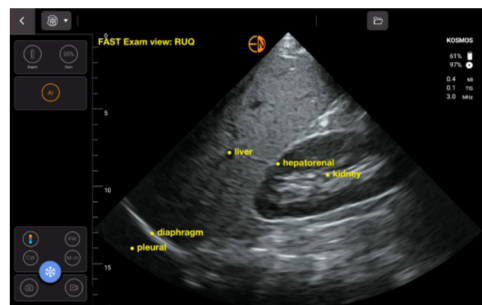
## Torso-One AI Bundle

Henry Schein Item #7023192

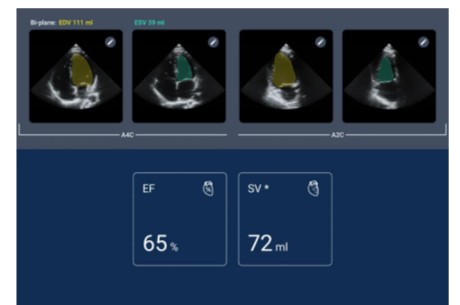
- **Torso-One:** Phased array technology provides imaging for cardiology and abdominal scanning
- **AI FAST:** Real-time automated AI anatomical labeling and view identification
- **Auto EF:** AI-driven EF calculations



A4C



AI FAST- RUQ



Auto EF

**For more information on ordering our products, contact your Henry Schein Medical EMS Representative at 1-800-845-3550 or email [EMS@henryschein.com](mailto:EMS@henryschein.com)**

\*Not all features are available in all markets, please check with your local representative for availability in your region.