



LEXSA™

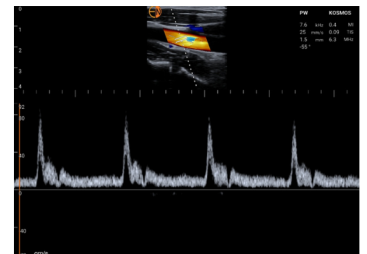
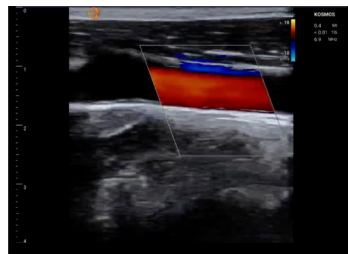
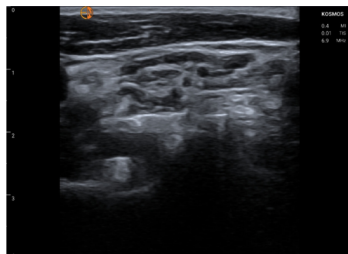
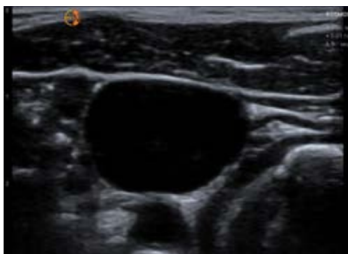
## A TRUE HYBRID. CART-BASED PERFORMANCE; HAND-CARRIED DEVICE.

EchoNous™ has developed a diagnostic platform aimed at shattering the paradigm of the use of ultraportable ultrasound devices in medicine, removing the diagnostic limitations usually associated with hand carried or quick look products. The Kosmos platform has advanced diagnostic and quantification capabilities not available on any other POCUS tool in its class, and uses AI and deep learning algorithms to facilitate training and automate complex calculations.

Continuing with changing perceptions, Lexsa is a 64/128 channel linear probe that uses the power of the Kosmos engine to produce outstanding image clarity for nerve, vascular, MSK, and lung applications.

### Built for real-life patient situations

Patients come in all shapes and sizes, presenting with various pathologies. Kosmos was built with this in mind and tested to ensure high-confidence imaging on the most challenging patients. The proof is in the imaging.

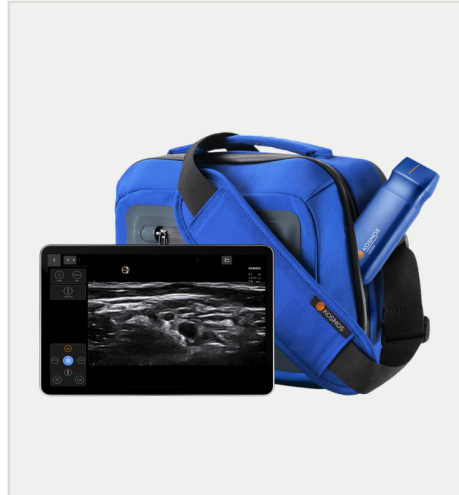


## One Probe, Multiple Configurations



### Standalone Probe

The Lexsa probe is specially optimized to provide exceptional linear array imaging for MSK, Vascular, Nerve, and Lung applications.



### Kosmos Mobile

Tailored for on-the-go clinicians, Kosmos Mobile includes an Apple iPad Air or Pro®, the Kosmos Essentials Carrying Case, Lexsa, Torso-One, or both probes, advanced Doppler features, and our AI capabilities.



### Kosmos Plus

Fully-featured POCUS configuration with everything included – cutting-edge AI, advanced Doppler features, Lexsa, Torso-One, or both probes, a 13-inch Apple iPad®, and a medical-grade stand.

## LEXSA SPECS

- Exam Types: Vascular, Nerve, MSK, Lung
- Modes: B-Mode, M-Mode, PW, Color, CPD
- 2D Measurements: Caliper, Distance
- Scan Depth: 1-10 cm
- 2D Frequency: 3-10.5 MHz
- Center Frequency: 7.5 MHz
- Footprint: 38mm x 8mm
- Mass: 280g
- Cable Length: 1.5 m



### Durable

Lexsa is IP67 rated and tested to withstand the rigors of any point-of-care environment



### 5-Year Warranty

Industry-leading, no fine-print, 5-year warranty




### Made in USA

Manufactured with excellence in Washington State

## SEE KOSMOS IN ACTION

 (844) 854-0800  
[www.echonous.com](http://www.echonous.com)

 **EchoNous Inc.**  
8310 154th Ave NE  
Building B, Suite 200  
Redmond, WA 98052, U.S.A.

\*Not all features are available in all markets, please check with your local representative for availability in your region.

© 2015 to 2024 EchoNous, Inc., or its affiliates. All rights reserved. EchoNous, echonous.com, and the EchoNous logo are trademarks of EchoNous, Inc. or its affiliates. EchoNous, Inc. 8310 154th Ave. NE, Building B, Suite 200, Redmond, WA 98052. D009673\_Rev M