



TORSO-ONE™

A TRUE HYBRID. CART-BASED PERFORMANCE; HAND-CARRIED DEVICE.

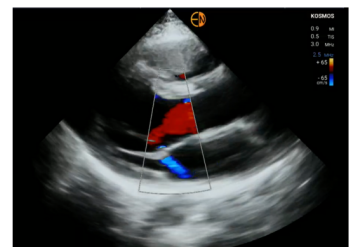
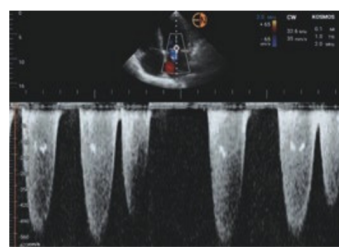
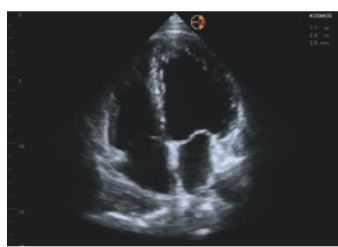
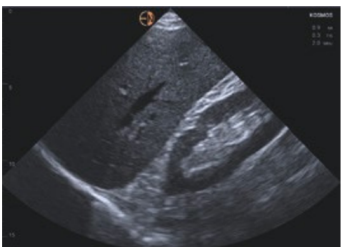
EchoNous™ developed the Kosmos Torso-One to give point-of-care clinicians the most information possible at the patient's bedside. By infusing the power and performance of premium ultrasound systems, combined with industry-leading AI, into a sophisticated hand-carried form factor, we have achieved that goal – though we've only just begun.

Built for real-life POCUS situations

Get optimal imaging without lifting a finger. Kosmos, with its superior image quality and Auto Preset — which adjusts the exam type in real-time based on the anatomy you are scanning — you can spend less time trying to optimize the image and more time caring for your patients.

CW, PW, TDI and Auto Doppler

With CW, PW, and TDI capabilities, you can acquire valuable, in-depth information at the bedside to make more confident patient management decisions. Auto Doppler goes even further! Available with PW and TDI, it will place the sample gate in the optimal location for more efficient and consistent cardiac valve interrogation.

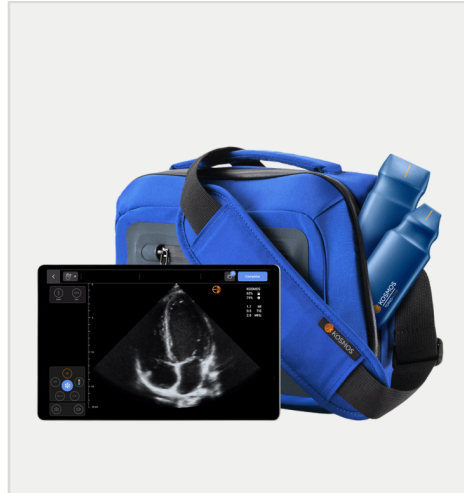


One Probe, Multiple Configurations



Standalone Probe

The Torso-One probe, proven equivalent in quality, performance, and features to high-end cart systems, is specially optimized to provide exceptional whole-torso imaging for heart, lung, and abdominal applications.



Kosmos Mobile

Tailored for on-the-go clinicians, Kosmos Mobile includes an Apple iPad Air or Pro®, the Kosmos Essentials Carrying Case, Torso- One, Lexsa or both probes, advanced Doppler features, and our AI capabilities.



Kosmos Plus

Fully-featured POCUS configuration with everything included – cutting-edge AI, advanced Doppler features, Torso-One, Lexsa or both probes, a 13-inch Apple iPad®, and a medical-grade stand.

TORSO-ONE SPECS

- AI Features: Auto EF, AI FAST, Auto Doppler, Auto Preset, AI VTI Trace
- Exam Types: Cardiac, Lung, & Abdomen
- Modes: 2D, M-Mode, Color, PW, CW, TDI
- Comprehensive Cardiac 2D and Doppler Calc Package
- Scan Depth: 4cm- 30cm
- 2D Frequency: 1.5 - 4.5 MHz
- Center Frequency: 3 MHz
- Footprint: 20.7mm x 16mm
- Mass: 275g
- Cable Length: 1.5 m



Durable

Torso-One is IP67 rated and tested to withstand the rigors of any point-of-care environment



5-Year Warranty

Industry-leading, no fine-print, 5-year warranty




Made in USA

Manufactured with excellence in Washington State

SEE KOSMOS IN ACTION

 (844) 854-0800
www.echonous.com

 **EchoNous Inc.**
8310 154th Ave NE
Building B, Suite 200
Redmond, WA 98052, U.S.A.

*Not all features are available in all markets, please check with your local representative for availability in your region.

© 2015 to 2024 EchoNous, Inc., or its affiliates. All rights reserved. EchoNous, echonous.com, and the EchoNous logo are trademarks of EchoNous, Inc. or its affiliates. EchoNous, Inc. 8310 154th Ave. NE, Building B, Suite 200, Redmond, WA 98052. D009346 REV G