

KOSMOS
by EchoNous



EXPLORE THE POWER OF KOSMOS


EchoNous is at the forefront of point-of-care ultrasound (POCUS) innovation, revolutionizing the field by introducing an all-new POCUS category, powered by AI.

Traditional handheld ultrasound devices offer affordability and portability but often compromise on image quality and advanced capabilities. In contrast, cart-based systems provide exceptional image quality and comprehensive features but lack affordability and portability. With Kosmos, users get both the exceptional image quality and advanced performance of cart-based systems, with the affordability and unmatched portability of a handheld system. Layered on top of that is industry-leading AI that helps flatten the learning curve for novices and makes exam workflows more efficient. Kosmos is a POCUS solution that is both accessible enough for new users and powerful enough for experts. Don't settle for less, experience the perfect balance of accessibility and performance of Kosmos.

Schedule A Demo of Kosmos

 (844) 854-0800

www.echonous.com

 **EchoNous Inc.**
8310 154th Ave NE
Building B, Suite 200
Redmond, WA 98052, U.S.A.

Scan QR code



ONE SYSTEM, MULTIPLE CONFIGURATIONS

Kosmos Mobile

Henry Schein Item #7023564

Tailored for on-the-go clinicians, Kosmos Mobile includes an Apple iPad Air or Pro®, the Kosmos Essentials Bag, choice of probes, advanced Doppler features, and our innovative AI capabilities. Elevate patient care, enhance patient outcomes, and improve workflow efficiency on the move.



Kosmos Probes

Torso-One

Henry Schein Item #1458670

The Torso-One probe is specially optimized to provide exceptional whole-torso imaging for heart, lung and abdominal applications.

Lexsa

Henry Schein Item #1458727

The Lexsa Linear Array probe is specially optimized to provide exceptional linear array imaging for MSK, Vascular, Nerve, Guidance, and Lung applications.



Torso-One



Lexsa



Durable

Kosmos probes are IP67 rated and tested to withstand the rigors of any point-of-care environment



5-Year Warranty

Industry-leading, no-fine print, 5-year warranty



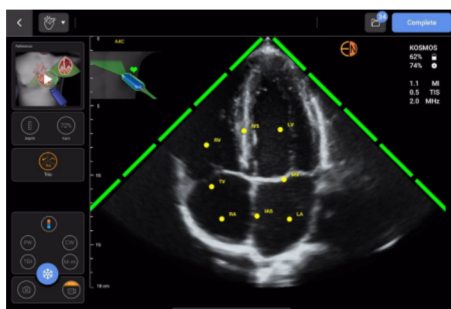
Made in USA

Manufactured with excellence in Washington

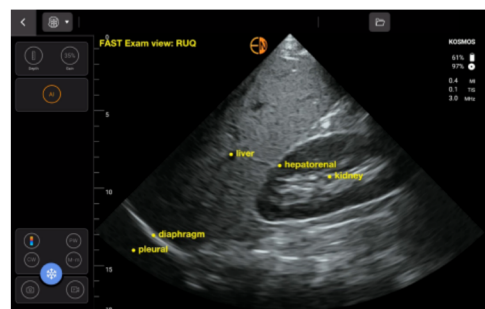
Torso-One AI Bundle

Henry Schein Item #7023192

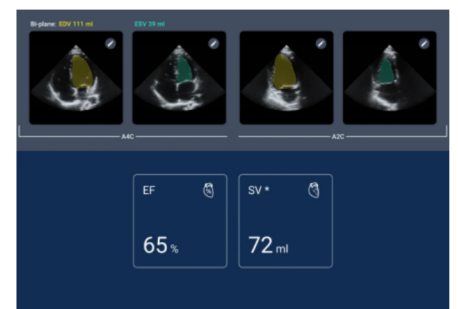
- **Torso-One:** Phased array technology provides imaging for cardiology and abdominal scanning
- **Trio:** Automated Guidance, Grading, and Labeling of the cardiac anatomy
- **AI FAST:** Real-time automated AI anatomical labeling and view identification
- **Auto EF:** AI-driven EF calculations



Trio



AI FAST



Auto EF

For more information on ordering our products, contact your Henry Schein Medical EMS Representative at 1-800-845-3550 or email EMS@henryschein.com

*The Kosmos Trio tool, AI FAST, and AI-Assisted EF workflow are released under the 'Enforcement Policy for Imaging Systems During the Coronavirus Disease 2019 (COVID-19) Public Health Emergency, Guidance for Industry and Food and Drug Administration Staff, April 2020' policy and have not been cleared by the FDA. These features are intended to be used by qualified healthcare professionals or under the supervision or in-person guidance of a trained or licensed healthcare professional.

**Not all features are available in all markets, please check with your local representative for availability in your region.