

VASCULAR ACCESS QUICK REFERENCE

The EchoNous System with the EchoNous Vein probe is for non-invasive imaging of the human body and is intended for the following applications: Peripheral vessel. Users must have training for ultrasound guided vascular access.



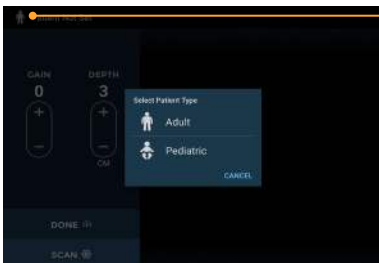
Refer to user manual before use.

Caution: Federal (USA) law restricts this device to sale by or on the order of a physician.




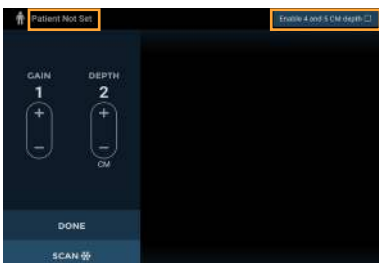
1 STARTING A VASCULAR ACCESS SCAN

- Tap **Vascular Access** to begin an exam.



2 SELECTING PATIENT TYPE

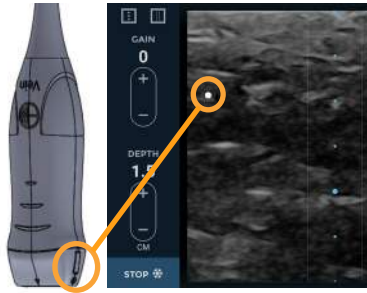
- Tap the **Patient Type** icon  to change the Patient Type if necessary.



3 ENTERING PATIENT DETAILS

- Tap **Patient Not Set** to select an existing patient or enter new patient details.
- If the patient is not set, the patient selection screen will appear when closing the exam.
- To enable depths of 4 and 5 CMs before a scan, tap the 3-dot icon in the upper right corner, select **Enable 4 and 5 CM depth**.

Refer to user manual for more detailed information on enabling 4 and 5 CM depths.



4

STARTING A SCAN

Tap the **Scan** button to start (unfreeze) and stop (freeze) scans.

Probe orientation is indicated by the orientation marker on the probe and the white dot on the display.



5


GAIN AND DEPTH


The scanning screen provides controls for changing gain (brightness), depth, toggling the center line, and toggling the needle guidance lines.

- Tap the **+** or **-** to adjust the gain or depth.
- Tap the **⋮** to toggle the center line on or off.
- Tap the **|||** to toggle the needle guidance lines.

6

MEASUREMENTS

Tap the Measurement icon  to insert calipers or arrows on images:


- Calipers measure a straight line distance between two points.
- Move the caliper or arrow using the Circular handle  to position each end of the caliper in the correct place.



7

CAPTURING IMAGES AND MOVIES

An image is automatically saved each time scanning is stopped.

- Tap the movie icon  to save the last sixteen seconds of the ultrasound scan as a movie clip.
- Tap the movie icon on the image to show the movie controls.

Refer to user manual for more detailed information on annotations, notes and other functions.