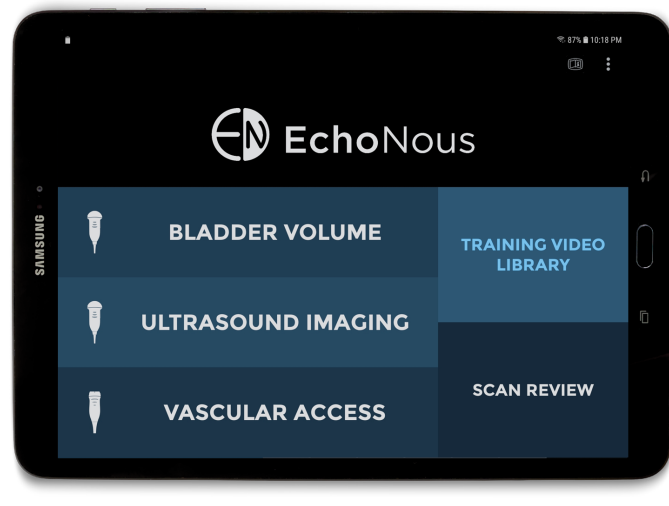


Bladder

A highly reliable, all-electronic,
non-mechanical bladder
tool designed to improve
durability



EchoNous Bladder™ brings together data-rich fanning, a state-of-the-art AI algorithm using Convolutional Neural Networks (CNN) and a rugged probe design to help nurses quickly determine bladder volume of patients even pregnant and post-partum patients.



KEY FEATURES



Rugged and reliable

The highly reliable, all-electronic, non-mechanical bladder scanning probe has no moving parts, thus bringing a new level of reliability and durability.



Sleek and ergonomic probe design

Smoothly fan from hip to hip with the EchoNous Bladder probe that is lightweight and comfortable to hold



Engaging onscreen navigation

Onscreen prompts are designed to help you easily and quickly acquire bladder volume



AI-driven

EchoNous is focused on providing tools that deliver the best accuracy and reliability when used on live patients. Thus the AI algorithm is designed to learn and improve over time as more data is captured.



Effortless Warranty

With its 5-year product warranty, EchoNous Bladder has one of the industry's lowest cost of ownership.

Specifications And Key Applications

Weight	<ul style="list-style-type: none">• Tablet unit: 420 grams (14.8oz)• Probe: 181 grams (6.4 oz) (including cable)
Dimensions	<ul style="list-style-type: none">• Tablet unit: 24.46 x 15.95 x .56 cm• Probe: 6.0 x 2.4 x 13.5 cm• Connecting cable: 180 cm L
Transducer	<ul style="list-style-type: none">• Curved 4.0 MHz, 128 element
User interface	<ul style="list-style-type: none">• Touch screen• Context-sensitive videos• Text and voice recording• Data and ultrasound image outputs• Wireless printing
Measurement tools	<ul style="list-style-type: none">• Auto volume measurements• Distance measurement
Image storage	<ul style="list-style-type: none">• Local image storage• Remote server (DICOM)
Connectivity	<ul style="list-style-type: none">• Wi-Fi• Bluetooth connectivity• Automatic software updates
Battery	<ul style="list-style-type: none">• Can perform 25, 2-minute bladder probe scans in a 24-hour period while only using 25% of the tablet battery.
Portability	<ul style="list-style-type: none">• Available on a rolling stand or with a carrying case
Expandable platform	<ul style="list-style-type: none">• Pairs with EchoNous Vein so that the tools needed for bladder scanning and vascular access are all in one platform





CONTACT

www.EchoNous.com

8310 154th Avenue NE Bldg B, Suite 200
Redmond, WA 98052 United States

Tel 844-854-0800

©2019 to 2023 EchoNous Inc. EchoNous and EchoNous Bladder are registered and unregistered trademarks of EchoNous, Inc. Caution: Federal (USA) law restricts this device to sale by or on the order of a physician. MKT D007727 Rev E