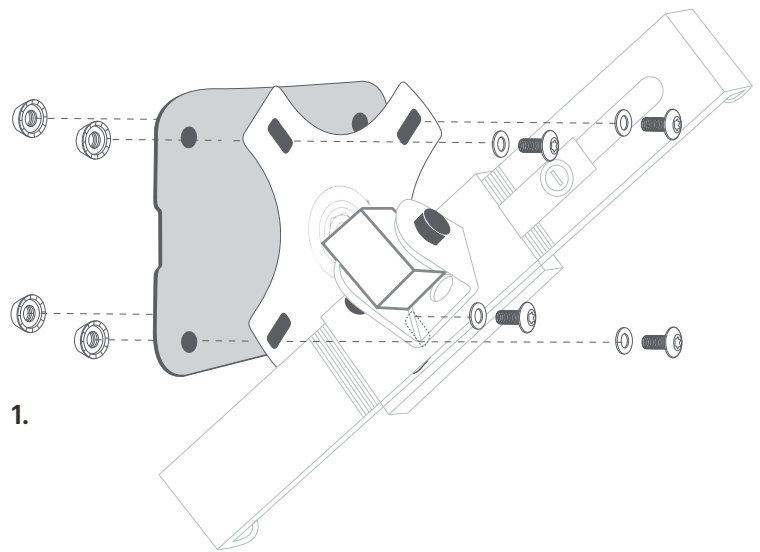


Set up

Installing the Tablet Mount to Kosmos AI Station

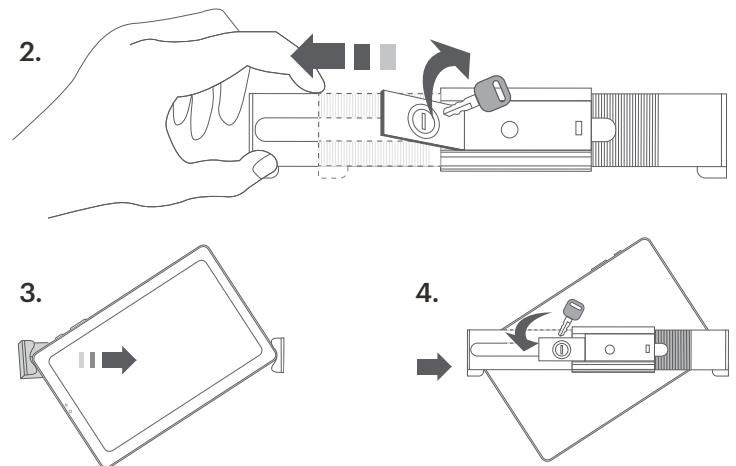
1. Attach the tablet mounting plate to the mounting plate of the AI Station as shown.

Use the Allen wrench for the screws and the Penta-Nut Key to tighten the tablet mount to the mounting plate.



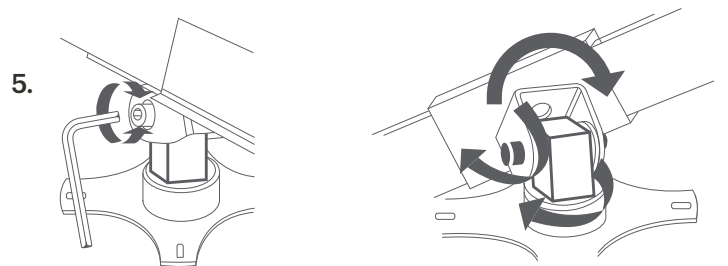
Installing the Tablet

2. Insert key into locking flap and turn counter clockwise to unlock. Pull back flap and slide corner grip open.
3. Insert tablet corner against fixed end, slide opposite corner grip down.
4. Push flap back in and turn key clockwise to lock again.



Adjusting Tablet Holder

5. Use the tablet mount Allen wrench to adjust the angle of the tablet.



Customer Support

Call 1-844-854-0800
Email support@echonous.com

Electronic versions of the Kosmos User Guides may be viewed and downloaded at echonous.com/resources

Printed versions of the Kosmos User Guides may be requested by emailing service@echonous.com or by calling 1-844-854-0800.



Android is a trademark of Google LLC.

©2023 EchoNous, Inc. EchoNous and KOSMOS are registered trademarks of EchoNous, Inc.

⚠ Caution: Federal (United States) law restricts this device to sale by or on the order of a physician.

Note: Not all features are available in all markets, please check with your local representative for availability in your region.

P007890-001 Rev A