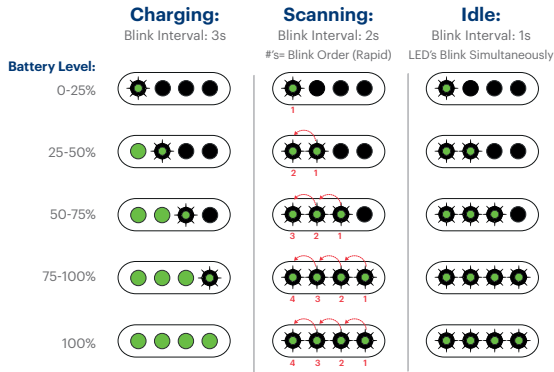


## Power Pack LED Status



### Compatibility:

See [echonous.com](http://echonous.com) for list of compatible tablets and probes

## Contact us

For questions, please contact EchoNous®  
Customer Support:

8310 154th Ave NE Ste 200  
Redmond, WA 98052  
Tel 1-844-854-0800  
Fax 425-242-5553  
Email [support@echonous.com](mailto:support@echonous.com)  
Web [echonous.com](http://echonous.com)



**Caution:** Federal (United States) law restricts this device to sale by or on the order of a physician.

**Note:** Not all features are available in all markets. Reference the user guide of your region or country for all available features before use.

A Product of



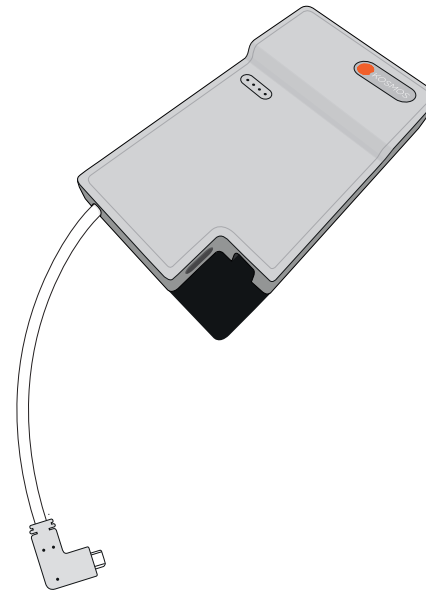
P007716-001 Rev A



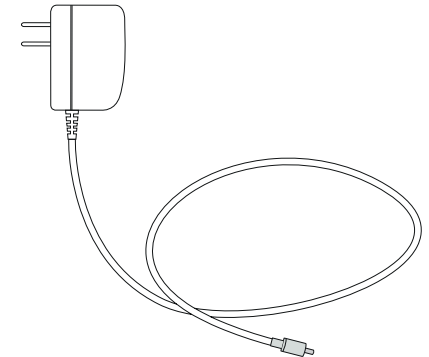
# Kosmos Power Pack Quick Start Guide

## What's in the box

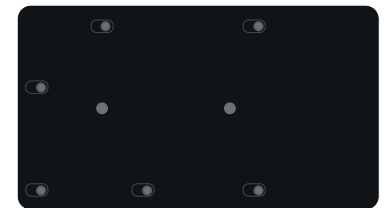
### Power Pack



### Charging Cord



### Mounting Plate

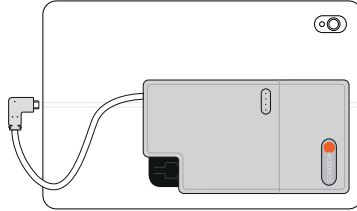


(Pre-attached to Power Pack)

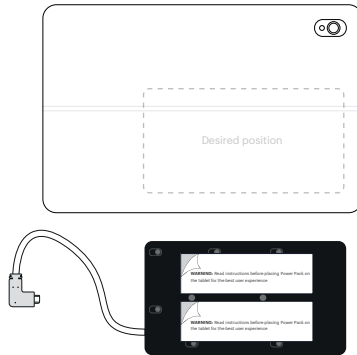
## Setting up your Power Pack

**Step 1:** Make sure Power Pack is charged for one hour prior to use.  
(See instructions on Charging your Power Pack).

**Step 2:** Position Power Pack onto device so that it sits comfortably in hand when in use, keeping both port to device and Power Pack on the same side.  
Depending on the size of the tablet, the Power Pack may need to shift to the left or right to get comfortable fit.



**Step 3:** Once the Power Pack position is set to your preference, peel off the adhesive backing on each strip and place the Power Pack onto the device in desired position. Press firmly onto the Power Pack and hold for 45 seconds to make sure adhesive is applied tightly to the device.



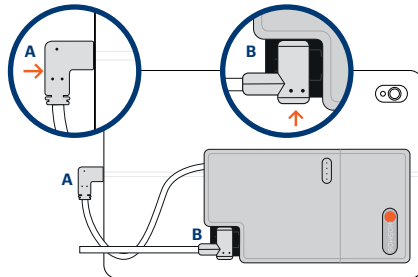
### Notes:

- Adhesive strips are not for reuse.
- The adhesive will not adhere to rubber.

**Step 4:** Connect the Power Pack cable to the tablet as shown

- A:** Power Pack cable  
**B:** Probe cable connection

**Note:** Power Pack must be connected to the tablet **first** in order for the probe to be recognized by the Power Pack.

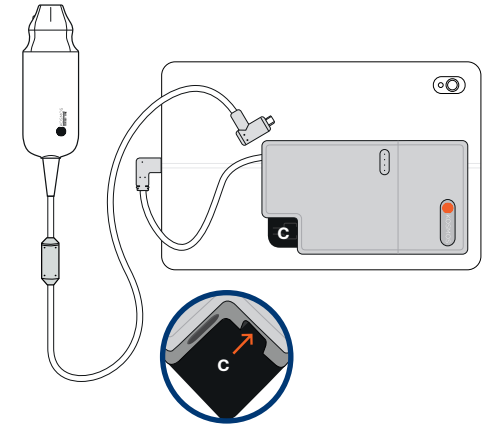


## Charging your Power Pack

**Step 1:** Disconnect the probe if connected.

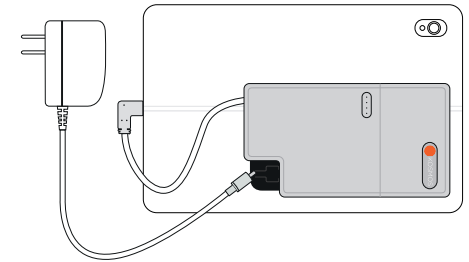
**Step 2:** Connect the charger to the Power Pack. Once connected, the lights on the Power Pack will indicate the battery power level.

**C:** AC Charger adapter point



**Step 3:** Disconnect charger once Power Pack is fully charged.

(See Power Pack LED Status).



## How to dismantle the Power Pack (optional)

**Step 1:** To remove the Power Pack from the mounting plate, press down on the release tab (D) and slide the Power Pack down.

**Step 2:** To mount the Power Pack back on, slide the Power Pack up into place.

