

Kosmos Bridge Software v7.2

Date: February 27th, 2023

Distribution: Internal (sales and clinical educators) and External (customers)

Kosmos Bridge Software v7.2 Release

The Bridge v7.2 software release provides the following features and improvements for Kosmos:

- Sweep speeds to support 25, 50, 75, and 100 mm/sec for M-mode, PW, CW, and TDI.
- Improved workflow and navigation
- Multiple VTI measurements on the same frame
- Cardiac measurements unit settings
- Heart rate measurements in Doppler
- Text annotation in both Abdomen and Cardiac presets
- DICOMDIR support
- US2.ai workflow improvements

*Please note that Kosmos Bridges with older software versions (prior to v7.2) using a Kosmos Hub, will not register a Lexsa probe that has the newest probe firmware version (1.0.18). Please contact EchoNous customer service with any questions regarding this issue.

System Software Availability

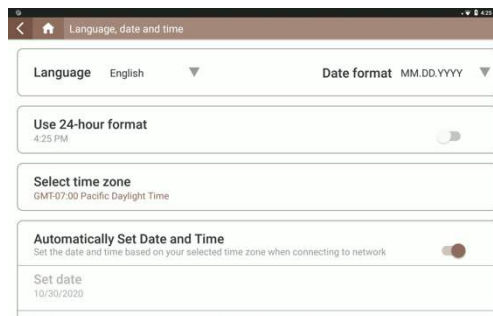
The Bridge v7.2 system software is available for customers in the following countries:

- | | | |
|------------------------|----------|-------------|
| • USA | • UAE | • South |
| • Nepal | • Egypt | Africa |
| • Oman | • Jordan | • Lebanon |
| • Philippines | • Israel | • Hong Kong |
| • Trinidad &
Tobago | • Iraq | |

Software Update Process

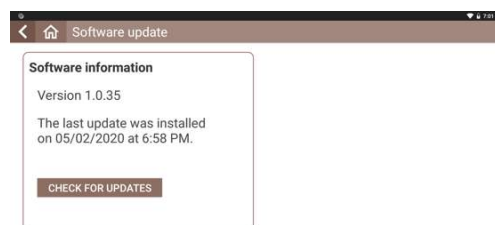
Update Over Wi-Fi

From the Home screen, tap settings.
Tap Language, Date, and Time.
Ensure “Automatic Date and Time”
is enabled.



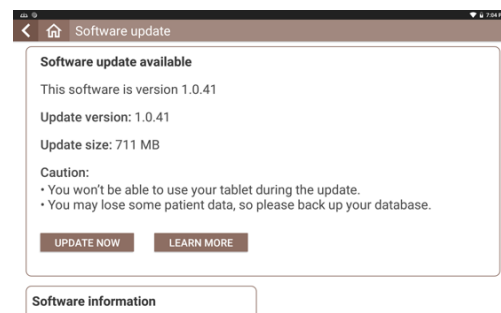
Connect the Wi-Fi network with an
internet connection.

Go to Settings > Admin > Updates
and press CHECK FOR UPDATES.

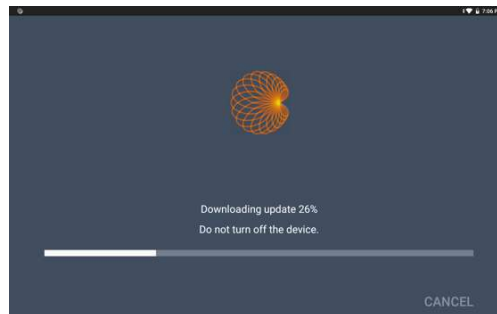


The device will connect with the update
server and press UPDATE NOW.

Note: The picture shown is an example
of the screen you will see. The update
version indicated will be different.

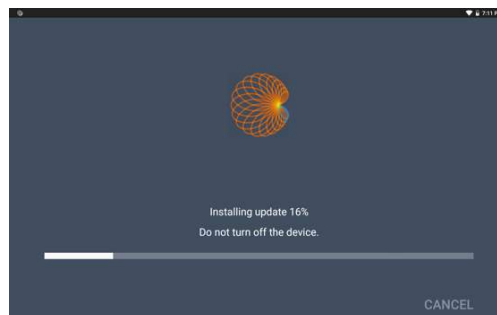


The device will begin to download the update package from the server. You will be able to see the progress of the download.



After the update package has been downloaded, the system will begin installing the update package.

Installation of the download package can take about a minute or two. You will be able to see the progress of the installation.



Once the installation is complete, the Kosmos Bridge will reboot and a message will appear saying that the update is complete.

Update Using USB Flash Drive

If the device cannot be connected to the internet, the software may be updated by a USB flash drive.

For a USB flash drive, contact EchoNous Customer Service by telephone at (844) 854-0800 or via email at service@echonous.com.

Note that KOSMOS System Software must be installed from a USB flash drive provided by EchoNous.

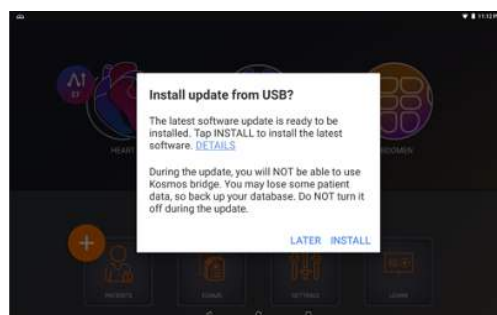
Plug the USB Flash Drive directly into the USB-C port on the side of the Kosmos Bridge.

The system will recognize the USB drive and begin to verify its contents. This can take 2 to 3 minutes to complete.

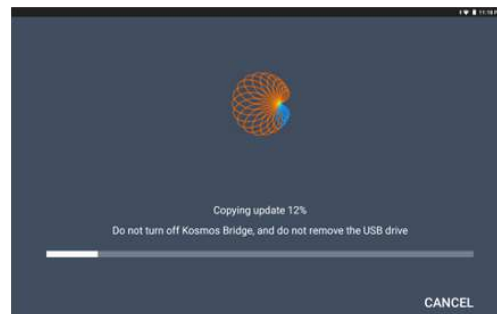


Once the contents of the plugged in USB drive have been verified, you will see a popup message.

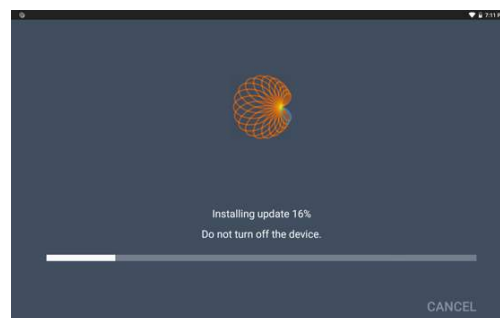
Press the INSTALL button.



Kosmos Bridge will begin copying the update package from the USB drive. You will be able to see the progress on the screen.



Once the update package has been copied, the installation process will immediately start.



Once the installation is complete, the Kosmos Bridge will reboot and a message will appear saying that the update is complete.

After the update is installed, shut down and restart the Kosmos Bridge using the power button.

Learn Videos

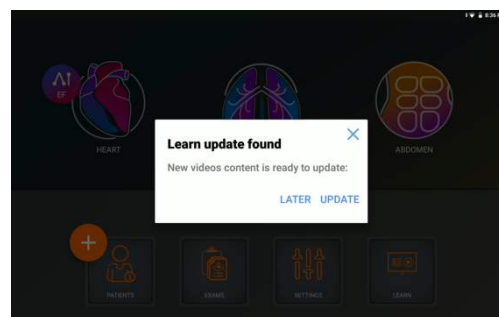
Install Using USB Flash Drive

To begin, insert the USB drive with the Learn video files directly into the USB-C port on the side of the Kosmos Bridge.

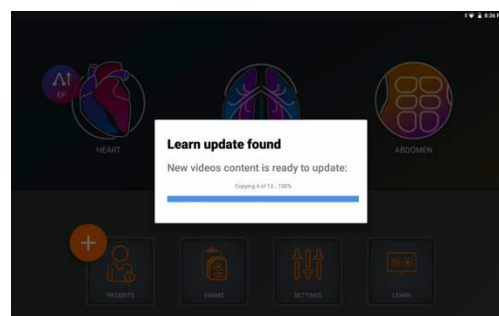
Tap the LEARN button on home screen.



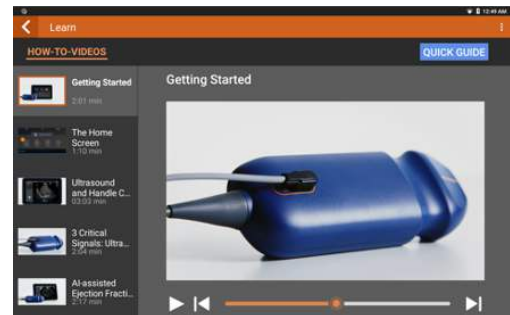
A popup message will appear, Tap UPDATE.



The update process will begin. You will be able to see the progress on the screen.



After the update is complete, the videos will be available in Learn.

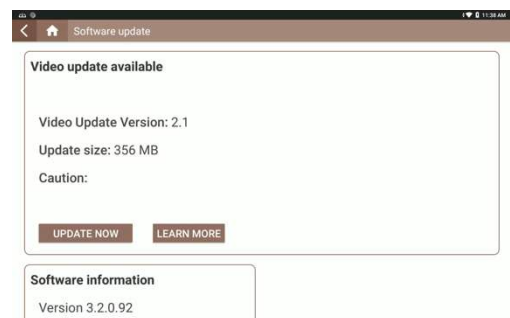


Install Over Wi-Fi

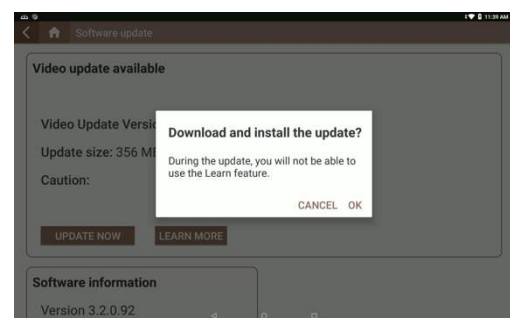
Connect the Wi-Fi network with an internet connection.

Go to Settings > Admin > Updates and press CHECK FOR UPDATES.

Press UPDATE NOW when update is available.



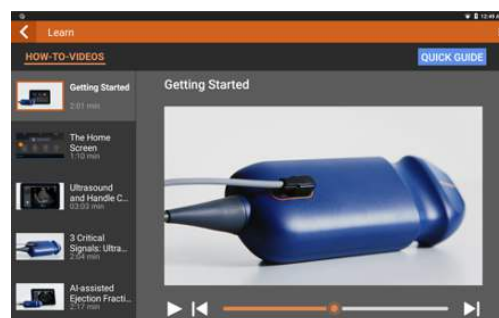
A popup message will appear, Press OK



During the download, the Learn button on the home screen is disabled and will show the progress of the download.



After the update is complete, the videos will be available in Learn.



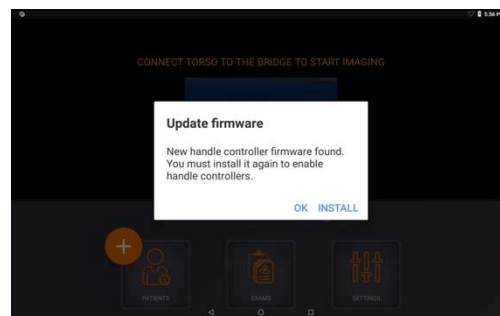
Enable the Handle Controls

The Handle Controls feature can be enabled from the Home Screen.

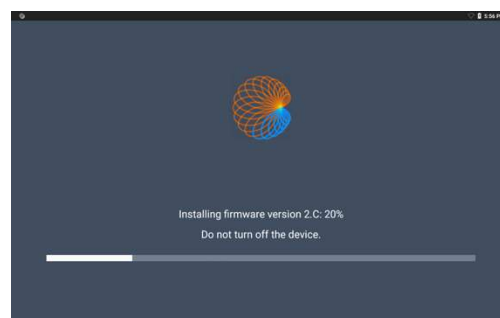
Tap TURN ON HANDLE CONTROLS then tap ON.



When the Handle Controls are enabled for the first time, Kosmos Bridge will prompt you to update the Handle Controller firmware.



Press the INSTALL button on the popup to update the Handle Controller firmware and Kosmos Bridge will proceed to install the firmware.



If you have any questions, contact EchoNous Customer Service by telephone at (844) 854-0800 or via email at service@echonous.com.