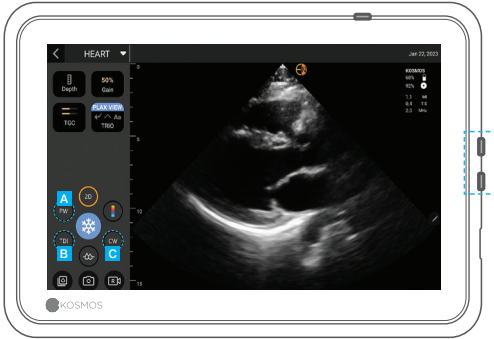


PW/CW Quick Guide

B-Mode



Placing sample gate



- A** PW Mode
- B** TDI Mode
- C** CW Mode

- 1** Move the circle to place the gate in the desired location
- 2** Tap Update

Both PW and CW modes are available with or without Color mode.

Adjust the volume to hear PW and CW signals.

PW Mode and TDI Mode



- 1** Indicator and toggle button to go between B-mode live and Doppler live

- 3** TDI Mode

- 2** Drag up or down to move the baseline

CW Mode and B-Mode Live



- 1 Similarly you can acquire CW signal by tapping on the CW mode button.
- 2 Do not forget to adjust the focal point to get the optimal waveform.

Cardiac Measurements and Annotations



Cardiac Calculations

Kosmos Cardiac Calculations Package gives you the ability to assess most valvular lesions and quantify ventricular chamber sizes and function:

- 1 Cardiac Calculations
- 2 Clear measurements
- 3 Text
- 4 View measurements report

Annotations

Annotations allow the user to mark and label images while frozen and in exam review. It also allows the user to do generic measurements that will not be saved in the report.

- 1 Annotations

Note: Not all features are available in all markets. Reference the user guide of your region or country for all available features before use.

⚠ **Caution:** Federal (United States) law restricts this device to sale by or on the order of a physician.