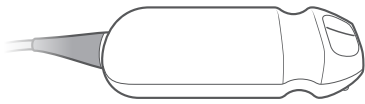


# KOSMOS: A New Kind of Medical Tool

[www.kosmosplatform.com](http://www.kosmosplatform.com)

## KOSMOS TORSO 3-Signal Probe

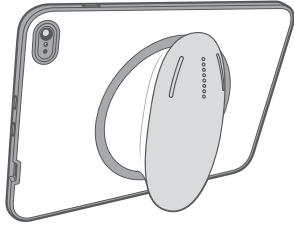
### KOSMOS TORSO



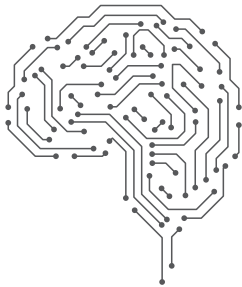
<b>Weight</b>	8 ounces
<b>Design</b>	Highly ruggedized design / Infection control resistant materials
<b>Ultrasound Implementation</b>	<ul style="list-style-type: none"> <li>• Proprietary <b>custom</b> ASIC Technology</li> <li>• High-bandwidth / high-sensitivity <b>phased array</b> Torso probe; optimized for high-resolution / high penetration imaging; heart, lungs and abdomen</li> <li>• <b>Pulsed &amp; Continuous Wave Doppler</b> (2nd release)</li> <li>• Advanced signal processing techniques found in large radiologic systems</li> </ul>
<b>Visual Auscultation</b>	<ul style="list-style-type: none"> <li>• High-performance microphones integrated inside Phased Array probe</li> <li>• High-fidelity analog signal conditioning, digitization and processing = high-quality sound + visual auscultation <b>waveform</b> display</li> </ul>
<b>ECG</b>	<ul style="list-style-type: none"> <li>• Highly integrated <b>3-lead</b> ECG (Lead I, Lead II and Lead III)</li> <li>• High-fidelity analog signal conditioning, digitization and processing = produce high-quality ECG waveforms</li> </ul>
<b>Synchronization</b>	<ul style="list-style-type: none"> <li>• 3 signals time - synchronized via proprietary EchoNous ASIC</li> <li>• <b>One - Step</b> acquisition</li> </ul>



## KOSMOS BRIDGE



<b>Weight</b>	23 ounces
<b>Design</b>	Highly ruggedized design using <b>premium materials</b> selected to withstand harsh chemicals from infection control and/or harsh environments
<b>Display</b>	<b>8-inch</b> high-definition display
<b>Battery Life</b>	Supports <b>2 hours</b> of continuous scanning
<b>User Interface</b>	Designed for frictionless UIF standard; includes single-hand usage & in motion
<b>Processor</b>	Latest <b>Qualcomm Snapdragon 835</b> processor; Neural Processing Engine provides high computing power for on board deep learning algorithm computation
<b>Wi-Fi</b>	<b>802.11ac</b> connectivity
<b>Connectivity</b>	DICOM connectivity (EMR connectivity follows initial release)
<b>Over-the-air updates</b>	Core SW & Artificial Intelligence App modules



## KOSMOS APPLIED ARTIFICIAL INTELLIGENCE

<b>Heart Function Assessment</b>	Automated Ejection Fraction, Stroke Volume and Cardiac Output Computation using deep learning techniques, clinically tested (study available)
<b>AI-Driven Cardiac Acquisition *</b>	<ul style="list-style-type: none"> <li>Automated <b>Anatomical Labeling</b> (Heart V1)</li> <li>Automated <b>Image Quality Grading</b> (Pre-established scale)</li> <li>Automated <b>Acquisition Guidance</b></li> </ul>
<b>AI Application Module Library</b>	<ul style="list-style-type: none"> <li>Following initial release, KOSMOS will offer continuously released clinical, job-based AI modules</li> <li>Each AI module will be available for over the air download</li> </ul>

A PRODUCT OF

