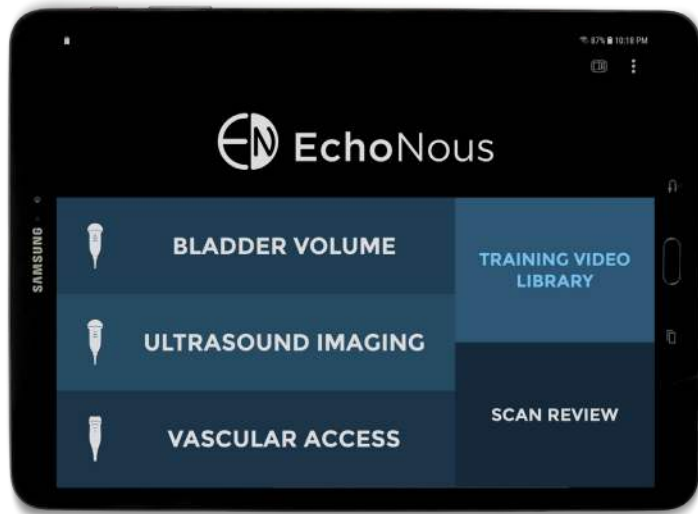




# Vein

Ultrasound guidance  
designed for peripheral  
IV placement

When you have an adult anxiously fidgeting remembering past multiple sticks or a baby crying and wiggling, finding the right vein can be challenging. EchoNous Vein™ is specifically designed to quickly find and assess veins to help you get the job of placing an IV done.



#### KEY FEATURES



### Easy to Use

Just two simple on-screen controls enable you to immediately visualize veins in the center of the display.



### High Resolution Images

Quickly acquire astoundingly clear images of veins at depths from 1 to 5 centimeters for immediate visualization of superficial and deeper veins on a wide array of patient types.



### Optimized Presets

Find and evaluate veins in both pediatric and adult patients through optimized gain and depth presets.



### Effortless Warranty

The industry's lowest cost of ownership, including a 5-year product warranty ensures the highest value for healthcare systems.

# Specifications And Key Applications

<b>Weight</b>	<ul style="list-style-type: none"><li>• Tablet unit: 420g (14.8oz)</li><li>• Probe: ~210g (~7.4 oz) (including cable)</li></ul>
<b>Dimensions</b>	<ul style="list-style-type: none"><li>• Tablet unit: 24.46 x 15.95 x .56 cm</li><li>• Probe: 3.9 x 1.9 x 10 cm</li><li>• Connecting cable: 137cm L</li></ul>
<b>Transducer</b>	<ul style="list-style-type: none"><li>• Linear 9.3MHz, 128 element</li></ul>
<b>User interface</b>	<ul style="list-style-type: none"><li>• Touch screen</li><li>• Text and voice recording</li><li>• Data and ultrasound image outputs</li><li>• Wireless printing</li></ul>
<b>Measurement tools</b>	<ul style="list-style-type: none"><li>• Distance measurement</li></ul>
<b>Image storage</b>	<ul style="list-style-type: none"><li>• Local image storage (depending on display model)</li><li>• Remote server (DICOM)</li></ul>
<b>Connectivity</b>	<ul style="list-style-type: none"><li>• Wi-Fi</li><li>• Bluetooth connectivity</li><li>• Automatic software updates</li></ul>
<b>Battery</b>	<ul style="list-style-type: none"><li>• Can perform 10, 5-minute vascular access scans in a 24-hour period while only using 25% of the tablet battery</li></ul>
<b>Portability</b>	<ul style="list-style-type: none"><li>• Rolling stand or carrying case</li></ul>
<b>Expandable platform</b>	<ul style="list-style-type: none"><li>• Pairs with EchoNous Bladder so that the tools needed for bladder scanning and vascular access are all in one platform</li></ul>





#### CONTACT

[www.EchoNous.com](http://www.EchoNous.com)

8310 154th Avenue NE Bldg B, Suite 200  
Redmond, WA 98052 United States

**Tel** 844-854-0800

©2020 EchoNous Inc. EchoNous, EchoNous Bladder and EchoNous Vein are registered and unregistered trademarks of EchoNous, Inc. Caution: Federal (USA) law restricts this device to sale by or on the order of a physician. MKT D007456 Rev H