



# Tablet & Transducer Setup

Kosmos Platform Quick Start Guide  
For iOS and Android Tablet Setup

# iOS and Android Tablet Setup

## Quick Start Guide for iOS and Android Tablet

### Getting Started

**Step 1**  **Fully charge the tablet prior to use**

**Step 2**  **Connect tablet to Wi-Fi**

**Step 3**  **Download EchoNous Ultrasound App**

**Note:** Create an Apple Store Account or Google Play Store account and then download the EchoNous Kosmos Ultrasound App. Your hospital IT department can assist with account setup if needed. (If you already have an Apple Store or Google Play account, please proceed with downloading the EchoNous Kosmos Ultrasound App).



**App: EchoNous Kosmos Ultrasound App EchoNous, Inc.**

Download EchoNous Kosmos Ultrasound App from the Apple App Store.

Download EchoNous Kosmos Ultrasound App from the Google Play Store.

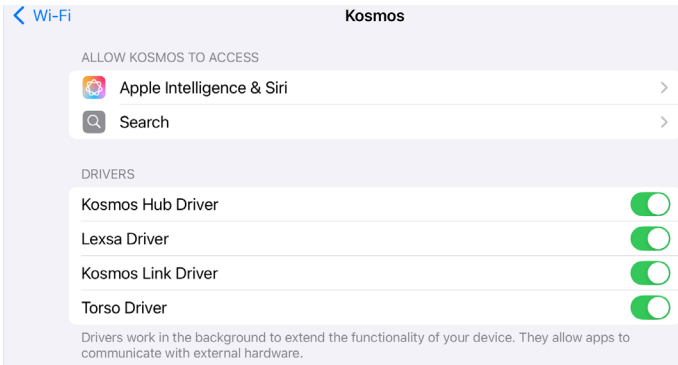
## For iOS:

Make sure your iPad operating system is up to date: **iOS 16.3 or newer**

Open the Kosmos app and from the home screen, tap "Enable Drivers" when prompted. You will be taken to the iOS settings and from there, toggle each driver to the **on** position. Alternatively, you can access the drivers via your iPad settings.

Connect the Kosmos probe(s) to your iPad or Kosmos Link (if equipped). Any purchased software feature licenses will automatically download.

You may now select your desired preset and begin scanning.



## For Android:

Make sure your Android operating system is up to date: **Android 10 or newer**

Connect the Kosmos probe(s) to your Android tablet or Kosmos Link (if equipped), select your desired preset and begin scanning.

# Torso-One

## Quick Start Guide for iOS and Android



### Getting Started

**Step 1**  Fully charge the tablet prior to use

**Step 2**  Connect tablet to Wi-Fi

**Step 3**  Download EchoNous Ultrasound App

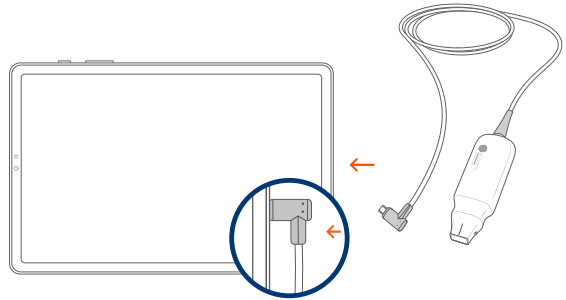
**Note:** Skip step 3 if you have already downloaded the Kosmos app.

## Step 4 Connect Torso-One

Connect Torso-One to the USB-C port on the side of your tablet.

**Note:** To register your transducer and licensed features for the first time, the probe must be connected to the device and your device must be connected to the internet. This step may take a few minutes.

**Note:** If purchased with Kosmos Link and AI Station, follow “Kosmos Link Quick Start Guide” and “AI Station Setup Quick Start Guide” for probe set up.

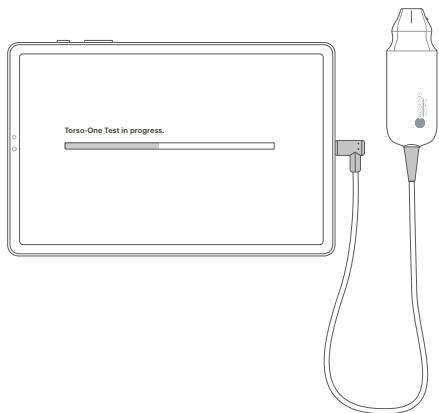


---

## Step 5 Transducer Element Check

An automatic Transducer Elements Test is initiated every time a Kosmos probe is connected to a device.

With the completion of a successful test, users can begin scanning.



# Lexsa

## Quick Start Guide for iOS and Android



### Getting Started

**Step 1**  **Fully charge the tablet prior to use**

**Step 2**  **Connect tablet to Wi-Fi**

**Step 3**  **Download EchoNous Ultrasound App**

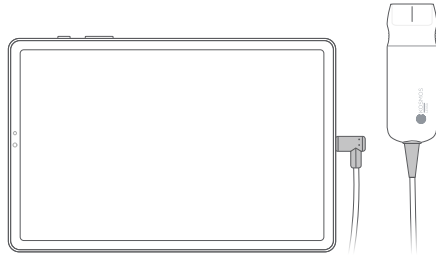
**Note:** Skip step 3 if you have already downloaded the Kosmos app.

## Step 4 Connect Lexsa

Connect Lexsa to the USB-C port on the side of your device.

**Note:** To register your transducer and licensed features for the first time, the probe must be connected to the device and your device must be connected to the internet. This step may take a few minutes.

**Note:** If purchased with Kosmos Link and AI Station, follow “Kosmos Link Quick Start Guide” and “AI Station Setup Quick Start Guide” for probe set up.

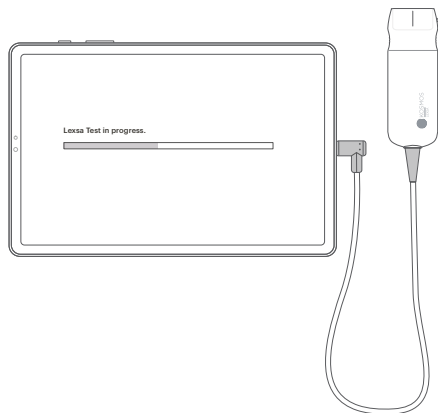


---

## Step 5 Transducer Element Check

An automatic Transducer Elements Test is initiated every time a Kosmos probe is connected to a device.

With the completion of a successful test, users can begin scanning.



# Purchasable Features for iOS and Android

Licensed features are optional-purchasable features. To check the status of licensed features, from the Kosmos Home screen, tap **Settings > About > Software Feature Details**.

For more information regarding these features, please contact your EchoNous representative.

## Customer Support



**EchoNous, Inc.**  
8310 154th Ave. NE, Building B, Suite 200  
Redmond, WA 98052

Call 1-844-854-0800  
Email [support@echonous.com](mailto:support@echonous.com)

Refer to user guide before use.

**△ Caution:** Federal (United States) law restricts this device to sale by or on the order of a physician.

**Note:** Not all features are available in all markets, please check with your local representative for availability in your region.

Please visit [www.echonous.com](http://www.echonous.com) for a current list of compatible tablets.



Android is a trademark of Google LLC.

© EchoNous, Inc., or its affiliates. All rights reserved.

EchoNous, [echonous.com](http://echonous.com), and the EchoNous logo are trademarks of EchoNous, Inc. 8310 154th Ave. NE, Building B, Suite 200, Redmond, WA 98052.

PO08721-002 Rev A