



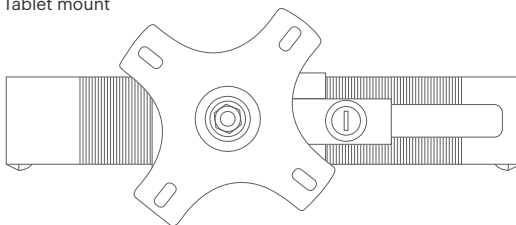
iOS and Android Tablet Mount

Installation Guide

Attach your tablet to Kosmos AI Station
using the CTA Digital Compact Security Mount.

What's in the box

Tablet mount



Screws (4)



Penta-Nuts (4)



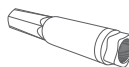
Tablet mount keys (2)



Washers (4)



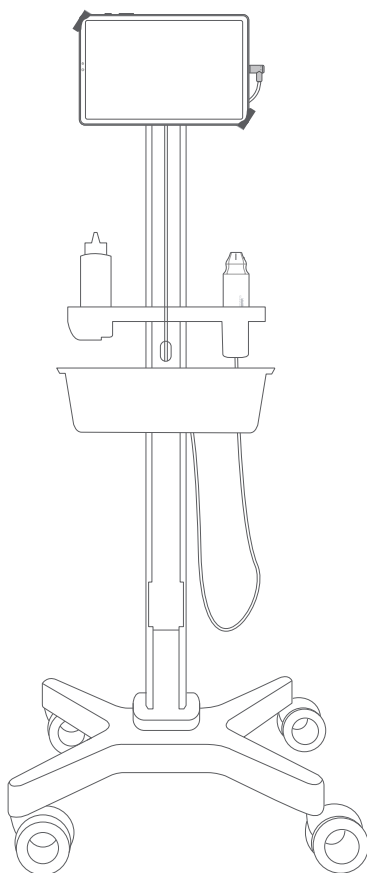
Penta-Nut key



Tablet mount
Allen wrench



Allen wrench



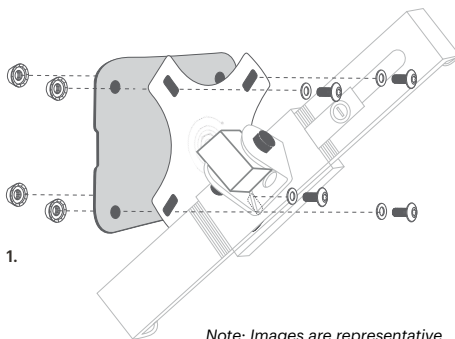
iOS and Android Tablet Mount

Set up

Installing the Tablet Mount to Kosmos AI Station

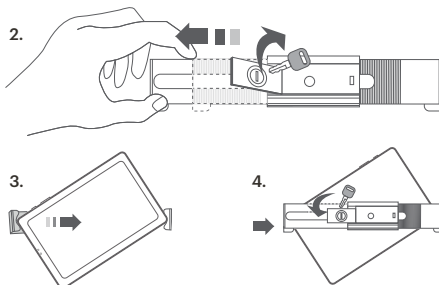
1. Attach the tablet mounting plate to the mounting plate of the AI Station as shown.

Use the Allen wrench for the screws and the Penta-Nut Key to tighten the tablet mount to the mounting plate.



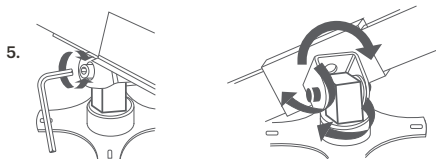
Installing the Tablet

2. Insert key into locking flap and turn counter clockwise to unlock. Pull back flap and slide corner grip open.
3. Insert tablet corner against fixed end, slide opposite corner grip down.
4. Push flap back in and turn key clockwise to lock again.



Adjusting Tablet Holder

5. Use the tablet mount Allen wrench to adjust the angle of the tablet.



Customer Support



EchoNous, Inc.

8310 154th Ave. NE, Building B, Suite 200
Redmond, WA 98052

Call 1-844-854-0800
Email support@echonous.com

Refer to user guide before use.

⚠ Caution: Federal (United States) law restricts this device to sale by or on the order of a physician.

Note: Not all features are available in all markets, please check with your local representative for availability in your region.

Please visit www.echonous.com for a current list of compatible tablets.



Android is a trademark of Google LLC.

© EchoNous, Inc., or its affiliates. All rights reserved.

EchoNous, echonous.com, and the EchoNous logo are trademarks of EchoNous, Inc. 8310 154th Ave. NE, Building B, Suite 200, Redmond, WA 98052.

P007890-002_Rev A