



Tablet & Transducer Setup

Kosmos Platform Quick Start Guide
for Bridge

Torso-One

Quick Start Guide for Bridge

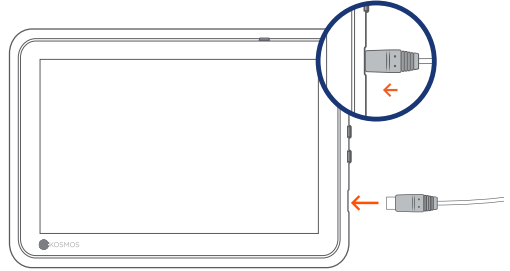
Getting Started

Step 1 Charge the Bridge

Plug the power supply into the USB-C port on the side of the Bridge

Step 2 Connect to Wi-Fi (Optional)

From the Kosmos Homescreen, tap **Settings** > **Admin** > **Wi-Fi**

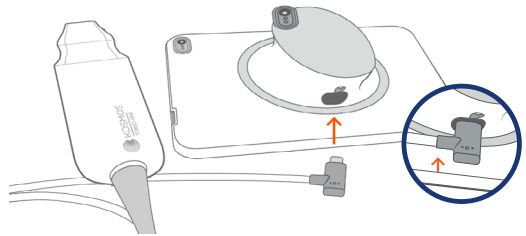


USB-C port for charging and Lexsa connector

Step 3 **Connect Torso-One**

Plug the Kosmos Torso-One connector into the port under the Kosmos Bridge Handle.

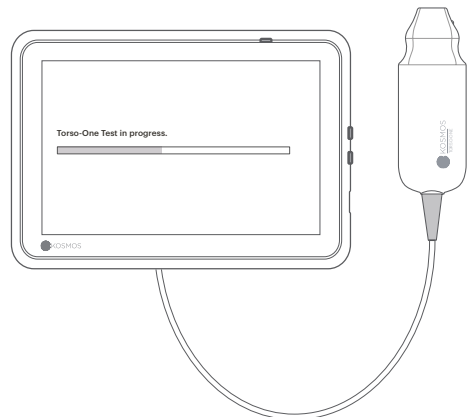
Note: To register your transducer and licensed features for the first time, the probe must be connected to the device and your device must be connected to the internet. This step may take a few minutes.



USB-C port for Torso-One connector

Step 4 **Transducer Element Check**

An automatic Transducer Elements Test is initiated every time a Kosmos probe is connected to a device.



Lexsa

Quick Start Guide for Bridge

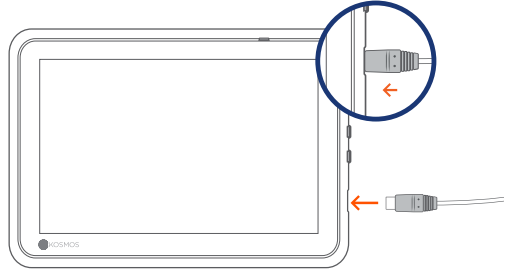
Getting Started

Step 1 Charge the Bridge

Plug the power supply into the USB-C port on the side of the Bridge

Step 2 Connect to Wi-Fi (Optional)

From the Kosmos Homescreen, tap **Settings** > **Admin** > **Wi-Fi**

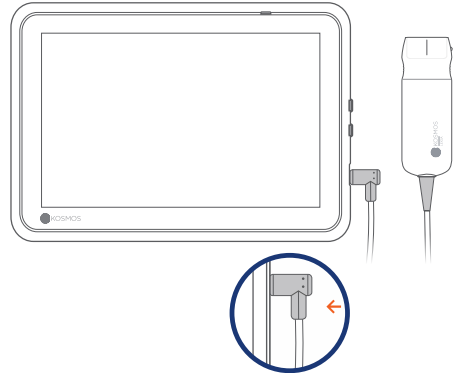


USB-C port for charging and Lexsa connector

Step 3 **Connect Lexsa**

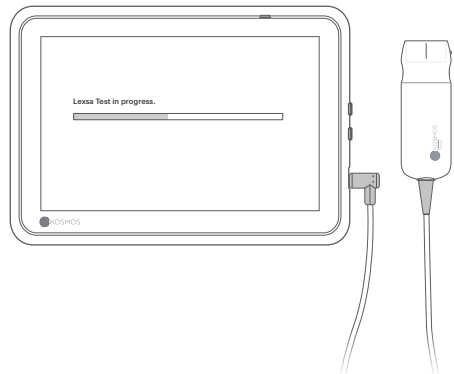
Connect Lexsa to the USB-C port on the side of your device.

Note: To register your transducer and licensed features for the first time, the probe must be connected to the device and your device must be connected to the internet. This step may take a few minutes.



Step 4 **Transducer Element Check**

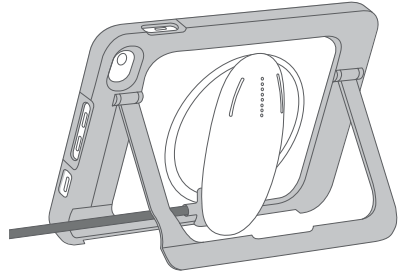
An automatic Transducer Elements Test is initiated every time a Kosmos probe is connected to a device.



Bridge Accessories (Optional)

Kickstand (Optional)

Insert Bridge into the kickstand and connect probe(s).



Purchasable Features for Bridge

Licensed features are optional-purchasable features. To check the status of licensed features, from the Kosmos Home screen, tap **Settings > About > Software Feature Details**.

For more information regarding these features, please contact your EchoNous representative.

Customer Support



EchoNous, Inc.
8310 154th Ave. NE, Building B, Suite 200
Redmond, WA 98052

Call 1-844-854-0800
Email support@echonous.com

Refer to user guide before use.

⚠ Caution: Federal (United States) law restricts this device to sale by or on the order of a physician.

Note: Not all features are available in all markets, please check with your local representative for availability in your region.

Please visit www.echonous.com for a current list of compatible tablets.



Android is a trademark of Google LLC.

© EchoNous, Inc., or its affiliates. All rights reserved.

EchoNous, echonous.com, and the EchoNous logo are trademarks of EchoNous, Inc. 8310 154th Ave. NE, Building B, Suite 200, Redmond, WA 98052.

P008720-001_Rev A