

Contact Us

For questions, please contact EchoNous®
Customer Support:

Call 1-844-854-0800
Fax 425-242-5553
Email support@echonous.com
Web echonous.com



Electronic versions of the Kosmos User Guides may be viewed and downloaded at echonous.com/resources.

Printed versions of the Kosmos User Guides may be requested by emailing service@echonous.com or by calling 1-844-854-0800.

Australia Sponsor
LC & Partners Pty Ltd
North Sydney, NSW, 2060
Australia
Tel: +61 2 9959 2400

Caution: Federal (United States) law restricts this device to sale by or on the order of a physician.

Note: Not all features are available in all markets. Reference the user guide of your region or country for all available features before use.



Quick Start Guide

What's in the Box

Bridge



Kosmos Bridge



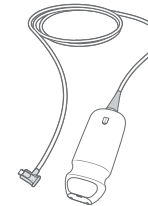
Power Supply

Lexsa

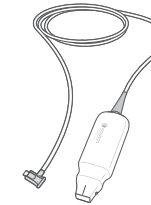


Kosmos Lexsa

Torso / Torso-One

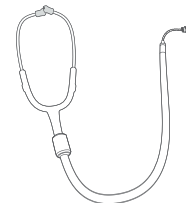


Kosmos Torso



Kosmos Torso-One

Torso Accessories



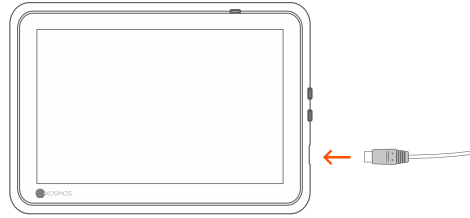
Binaural Headset



ECG Patient Cable

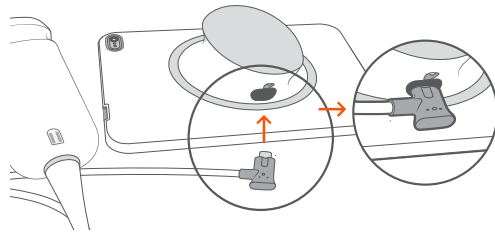
Charge the Bridge

To charge, attach the power supply into the USB slot on Kosmos Bridge and the other end into an electrical outlet.



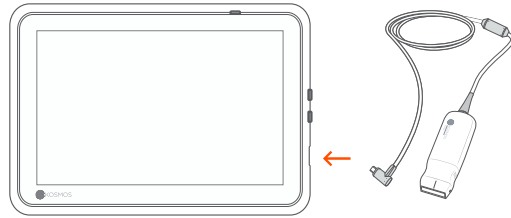
Connect Torso/Torso-One

Plug the Kosmos Torso or Torso-One connector into the slot under the Kosmos Bridge Handle.



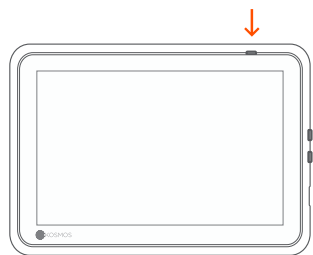
Connect Lexsa

Plug the Kosmos Lexsa connector into the USB slot on the Kosmos Bridge.



Turn on Kosmos

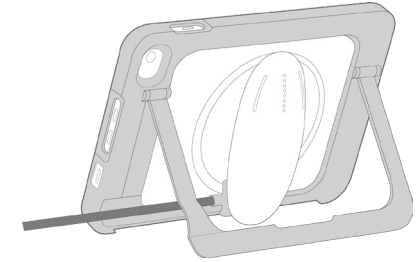
Press the power button to turn on Kosmos Bridge.



Assemble Stand (Optional)

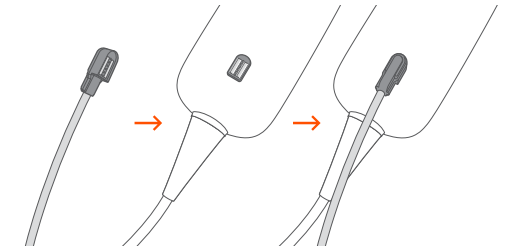
Insert Bridge into the kickstand and connect probe(s).

Adjust the position to get the best viewing angle and place on a flat surface.



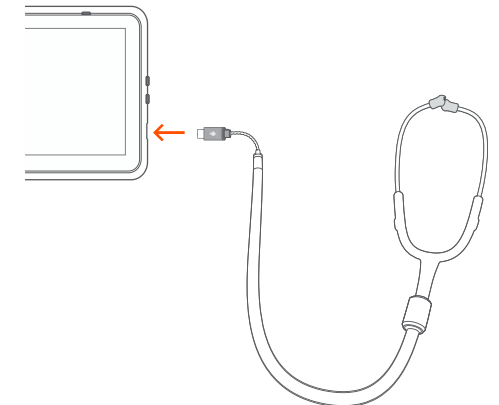
ECG (Only applicable with Torso)

To view the ECG Signal, connect the magnetic connector end of the ECG patient cable to Kosmos Torso.



Digital Auscultation (Only applicable with Torso)

To hear the digital auscultation sound, plug the USB end of the binaural headset into the USB slot on Kosmos Bridge.



ⓘ Please refer to the Kosmos Interface Guide for next steps.