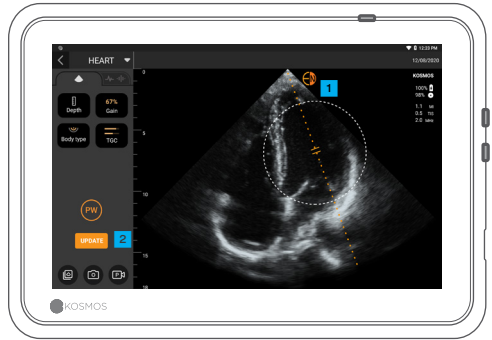


PW/CW Quick Guide

B Mode



PW Mode



A PW mode

B CW mode

1 Move the circle to place the gate or line in the desired location.

2 Tap Update

Both PW and CW modes are available with or without Color mode.

Adjust the volume to hear PW and CW signals.

Doppler Live vs B Live



1 Indicator and toggle button to go between B live and Doppler live

2 Drag up or down to move the baseline



3 B live screen

CW Mode



Similarly you can acquire CW signal by tapping on the CW mode button.

- Do not forget to adjust the focal point to get the optimal waveform.

Doppler Measurements



In addition to text and marker annotations the following Doppler measurements are available when frozen:

- 1 PHT (Pressure Half Time)
- 2 Velocity and PG (Pressure Gradient)
- 3 VTI (Velocity Time Integral)



VTI

- VTI automatically traces a peak. To choose a different peak, double tap any other peak.
- You can also edit the VTI trace by moving any of the control points.

Tip: Once a control point is selected, move your finger anywhere on the screen so that your finger does not hide the selected point.

Note: Not all features are available in all markets. Reference the user guide of your region or country for all available features before use.

⚠ **Caution:** Federal (United States) law restricts this device to sale by or on the order of a physician.