

Summary

The KOSMOS 1.0.43 system software update release provides user interface improvements.

This document provides EchoNous Sales and Clinical Support personnel and Biomedical Engineering customers with information regarding this software revision.

System Software v1.0.43 Update

The v1.0.43 system software features the following improvements:

- ◇ Improved user interface for imaging controls.

User Documentation Update

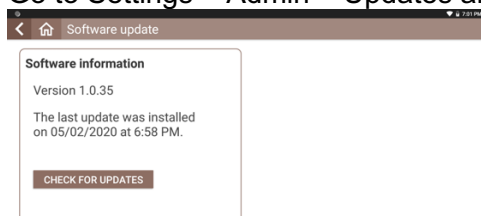
Revision of the system user interface requires revisions to the KOSMOS User Guide and KOSMOS UI Quick Guide. The revisions are intended to improve customer satisfaction and are not safety related.

- ◇ KOSMOS User Guide (P005794-003A May 2020) may be found online at http://echonous.com/en_us/resources/kosmos
- ◇ KOSMOS UI Quick Guide (P006120-002A) may be found online at http://echonous.com/en_us/resources/kosmos

Update Process

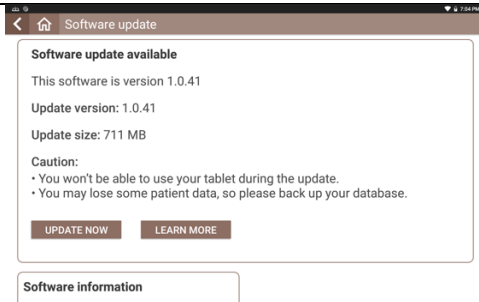
Over Wi-Fi

- ◇ Connect WiFi network with internet connection.
- ◇ Reboot the system - Press the power button to turn the system off, wait for the system to shut-down, then press the power button to turn the system back on.
- ◇ Go to Settings > Admin > Updates and press CHECK FOR UPDATES as shown below:



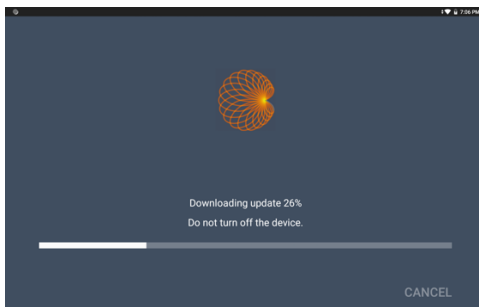
- ◇ The device will connect with the update server and you will see the following screen:

The picture shown below is an example of the screen you will see. **The Update version indicated will be 1.0.43.**

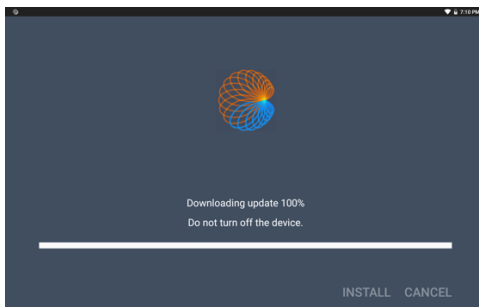


Press UPDATE NOW button.

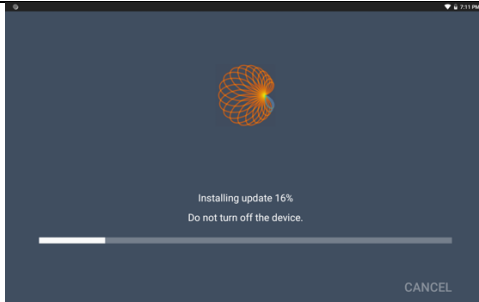
- ◇ The device begins to download the update package from the server and you will see the progress of download as shown below:



- ◇ When the downloading of the update package is completed, press the INSTALL button as shown below:



- ◇ Installation of the download package takes about a minute or two and you will see the progress of the installation as shown below:



- ◇ Once the installation is completed the Kosmos Bridge will reboot and you will see a message on the screen saying that the update is completed.

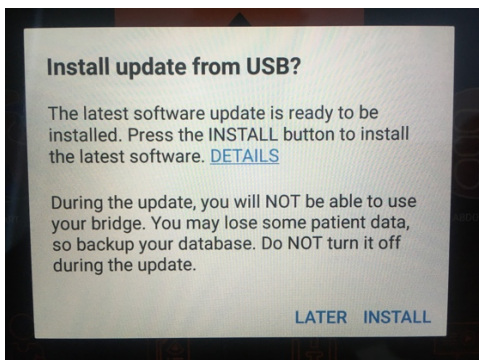
Using USB Flash Drive

If the device cannot be connected to the Internet, the software may be updated by means of a USB flash drive. Contact Customer Service for a USB flash drive certified for your system serial number. Note that KOSMOS System Software must be installed from an EchoNous flash drive and is only authenticated for a specific serial number.

- ◇ Plug the USB Flash Drive directly into the USB-C port on the side of the KOSMOS Bridge. The system will recognize the USB drive and begin to verify its contents. This could take 2 to 3 minutes to complete. You can check the progress of this verification by swiping down from the top of the screen and the status is shown as below:

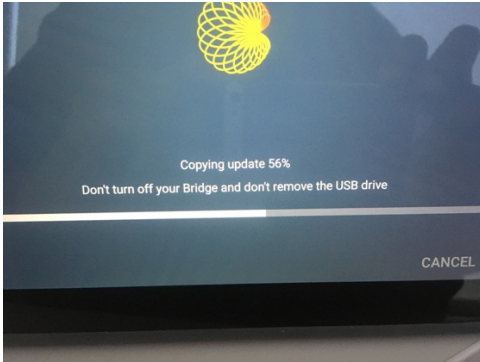


- ◇ Once the verification of the contents of the plugged in USB drive is completed you will see a popup as shown below:



Press the INSTALL button.

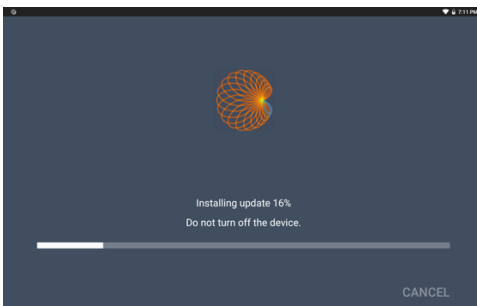
- ◇ Kosmos Bridge will begin copying the update package from the USB drive and the following screenshot shows the progress of this copying.



- ◇ When the Kosmos Bridge completes copying the update package, press the INSTALL button as shown below:



- ◇ Kosmos Bridge will begin to install the update the installation screen will look as shown below:



- ◇ Once the installation is completed, Kosmos Bridge will automatically reboot and you will see a popup indicating the completion of the update process.