

Summary

The KOSMOS 1.0.71 system software update release provides the following features:

- ◇ Complete "Trio" Feature Set. This release introduces the "Auto-Grading" and "Auto-Guidance" features to augment "Auto-Labeling" released in s/w 1.0.58 in imaging of Cardiac anatomy. These features leverage AI algorithms to assist clinicians during cardiac imaging. Auto-Guidance provides real-time information to the user regarding the position and orientation movements the user needs to make to acquire the desired A4C or A2C view. Auto-Grading provides real-time feedback as to how close the user is to the ideal view while they are making these adjustments.
- ◇ Provide transducer element check functionality. A simple test tells the user if whether there is any damage to the ultrasound array elements.
- ◇ Introduce Modality Work List functionality to provide large health systems improved integration in enterprise level patient management systems.

This document provides EchoNous Sales and Clinical Support personnel and Biomedical Engineering customers with information regarding this software revision.

System Software v1.0.71 Update

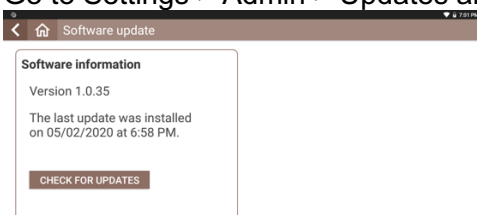
The v1.0.71 system software features the following improvements:

- ◇ Improve the utility of the Handle Control. With this release, users will be able to control imaging depth with the handle controls. Imaging depth will be controlled through the slider, and the user will be able to arbitrate the slider controller to imaging gain or imaging depth.
- ◇ Improve the design of Home screen.
- ◇ New system setting for default imaging orientation for Heart.

Update Process

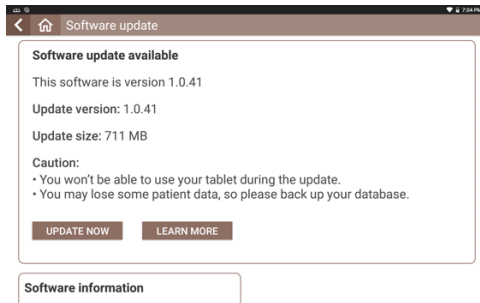
Over Wi-Fi

- ◇ Connect WiFi network with internet connection.
- ◇ Go to Settings > Admin > Updates and press CHECK FOR UPDATES as shown below:



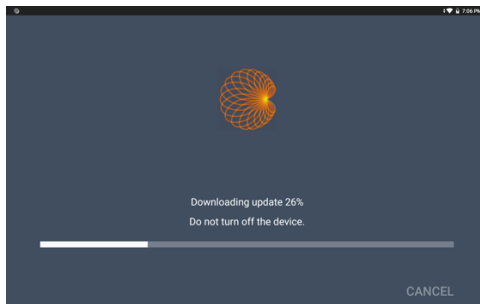
- ◇ The device will connect with the update server and you will see the following screen:

The picture shown below is an example of the screen you will see. The Update version indicated will be 1.0.71.

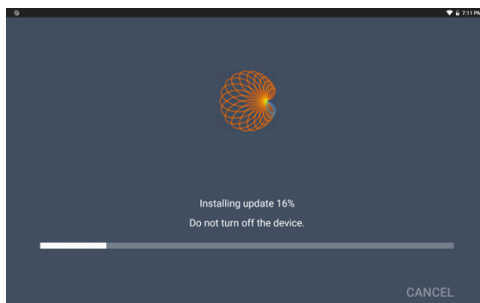


Press UPDATE NOW button.

- ◇ The device begins to download the update package from the server and you will see the progress of download as shown below:



- ◇ When downloading of the update package is completed, the installation of the downloaded package will start.
- ◇ Installation of the download package takes about a minute or two and you will see the progress of the installation as shown below:

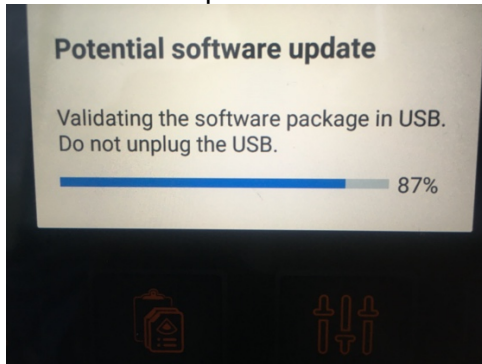


- ◇ Once the installation is completed the Kosmos Bridge will reboot and you will see a message on the screen saying that the update is completed.

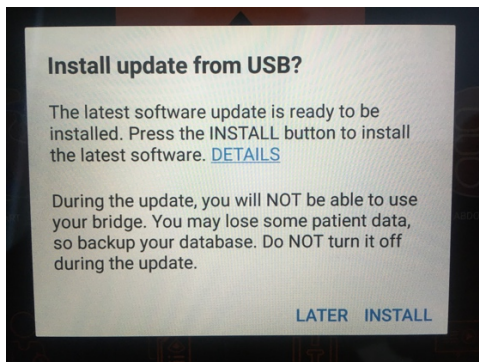
Using USB Flash Drive

If the device cannot be connected to the Internet, the software may be updated by means of a USB flash drive. Contact Customer Service for a USB flash drive certified for your system serial number. Note that KOSMOS System Software must be installed from an EchoNous flash drive and is only authenticated for a specific serial number.

- ◇ Plug the USB Flash Drive directly into the USB-C port on the side of the KOSMOS Bridge. The system will recognize the USB drive and begin to verify its contents. This could take 2 to 3 minutes to complete.

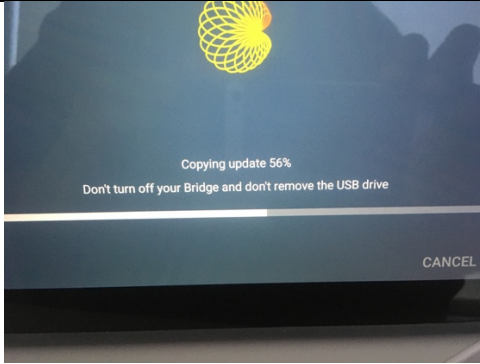


- ◇ Once the verification of the contents of the plugged in USB drive is completed you will see a popup as shown below:

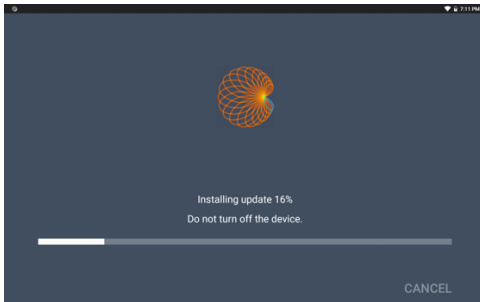


Press the INSTALL button.

- ◇ Kosmos Bridge will begin copying the update package from the USB drive and the following screenshot shows the progress of this copying.



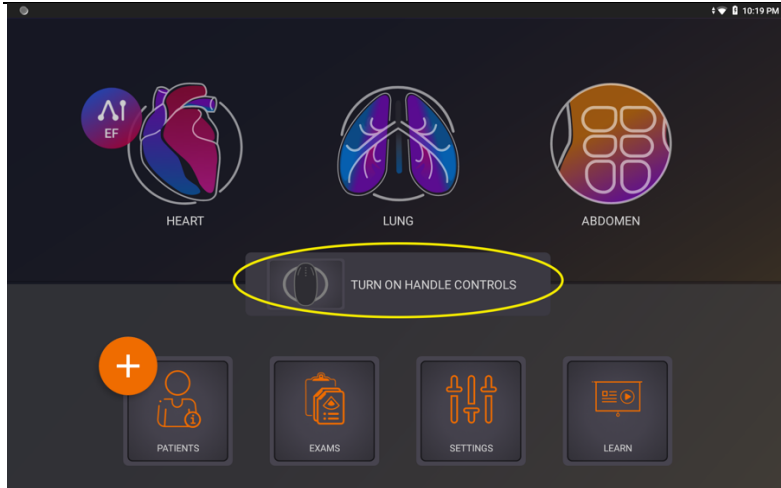
- ◇ When the Kosmos Bridge completes copying the update package, the installation of the copied update package will start immediately as shown below:



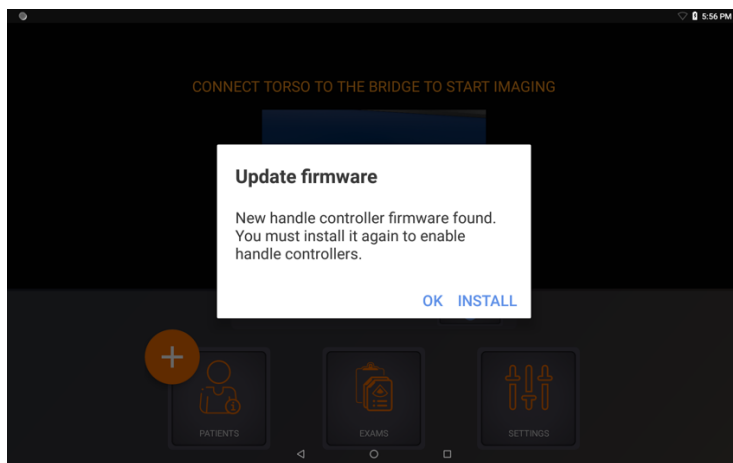
- ◇ Once the installation is completed, Kosmos Bridge will automatically reboot, and you will see a popup indicating the completion of the update process.

Enabling the Handle Controls

The Handle Controls feature can be enabled from the Home Screen by selecting the check box highlighted in the picture below:



When the Handle Controller is enabled for the first time after this software update, KOSMOS BRIDGE will prompt the user to update the Handle Controller firmware as shown below:



Press the **INSTALL** button on the popup to update the Handle Controller firmware and KOSMOS Bridge will proceed to install the firmware as shown below:

