

# Contact Us

For questions, please contact EchoNous®  
Customer Support:

Call 1-844-854-0800  
Fax 425-242-5553  
Email info@echonous.com  
Web echonous.com

# Quick Start Guide

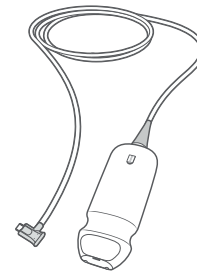


KOSMOS® is intended to be used by qualified and trained healthcare professionals in the clinical assessment of the cardiac and pulmonary systems and the abdomen by acquiring, processing, displaying, measuring, and storing synchronized ultrasound images, electrocardiogram (ECG) rhythms, and digital auscultation (DA) sounds and waveforms.

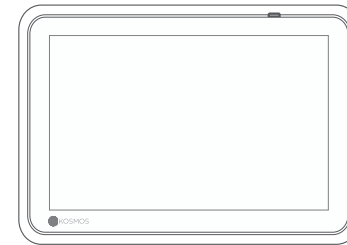
**Caution:** Federal (United States) law restricts this device to sale by or on the order of a physician.

 Refer to user guide before use.

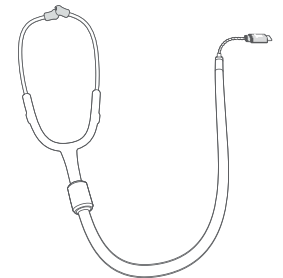
## What's in the Box



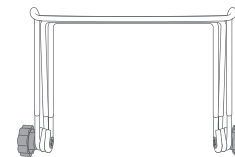
Kosmos Torso



Kosmos Bridge



Binaural Headset



Bridge Stand



Power Supply



USB Flash Drive



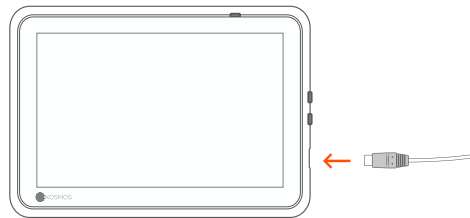
ECG Patient Cable



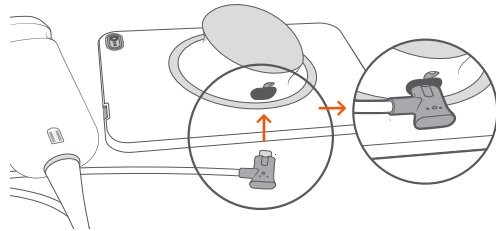
User Manual,  
Quick Start, UI,  
Handle Guides

## Set up your KOSMOS

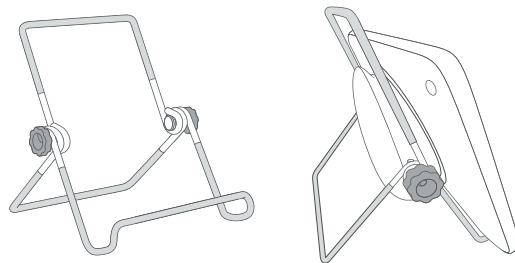
To charge, attach the power supply into the USB slot on Kosmos Bridge and the other end into an electrical outlet.



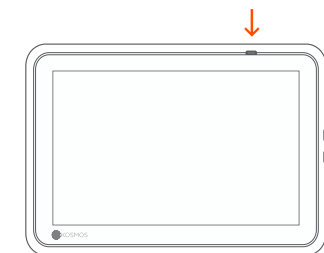
Plug the Kosmos Torso connector into the slot under the Kosmos Bridge Handle.



Unfold the stand, put it on a flat surface, and place Kosmos Bridge on it.



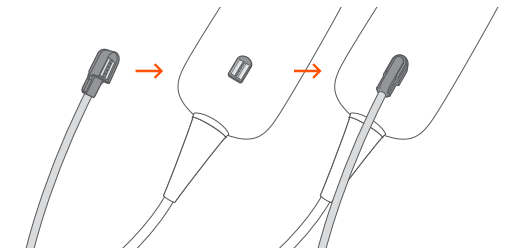
Adjust the position to get the best viewing angle



Press the power button to turn on Kosmos Bridge.

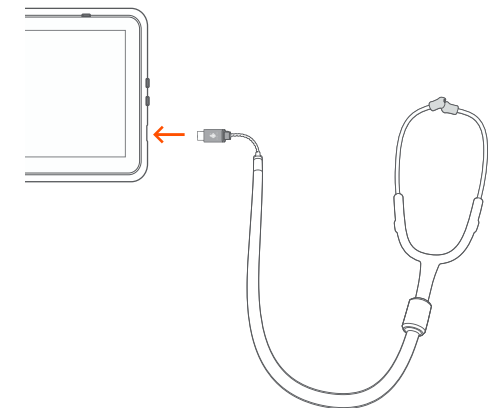
## ECG

To view the ECG Signal, connect the magnetic connector end of the ECG patient cable to Kosmos Torso.



## Digital Auscultation

To hear the digital auscultation sound, plug the USB end of the binaural headset into the USB slot on Kosmos Bridge.



ⓘ Please refer to the Kosmos Interface Guide for next steps.